

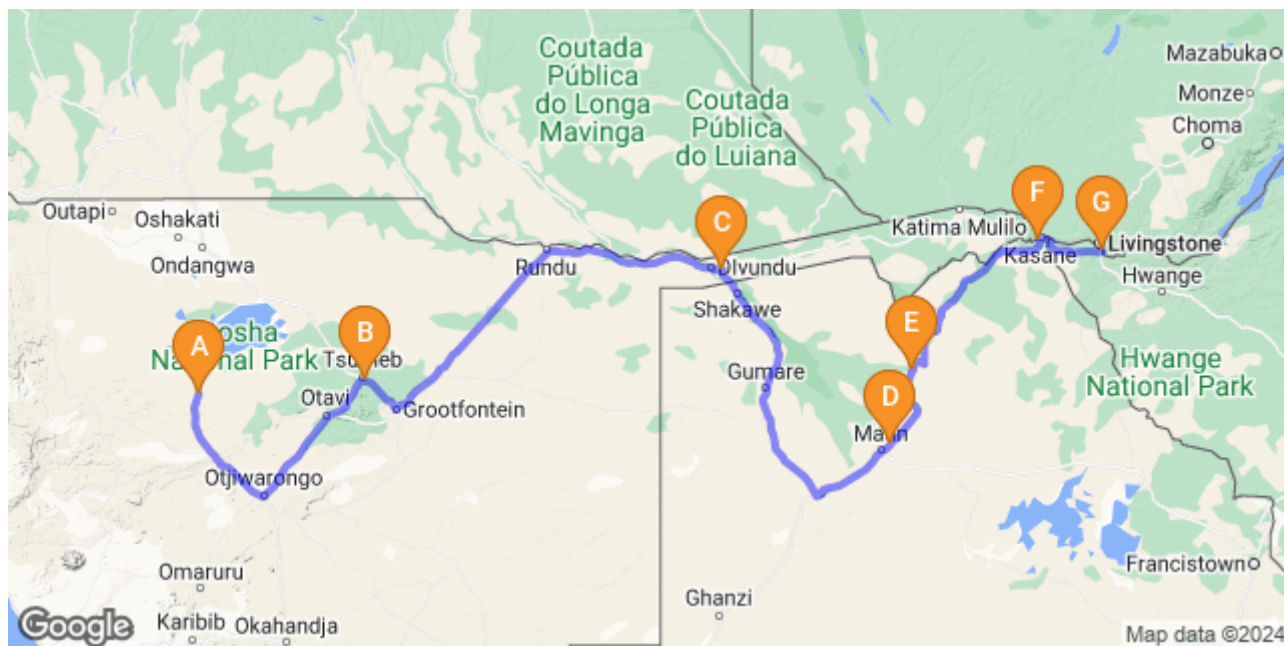


10-Day Windhoek, Botswana and Victoria Falls Safari (Camping





**10-Day Windhoek, Botswana and Victoria Falls Safari (Camping
Etosha South - Tsumeb - Divundu - Maun - Khwai Community Area - Kasane -
Victoria Falls (Zimbabwe))**
10 Days / 9 Nights



[Click here to view your Digital Itinerary](#)

Introduction

This 10 day Safari tour is in Namibia, Botswana, Zimbabwe and Zambia this is a comfort tour that brings you spectacular wildlife viewing in Namibia and Botswana along the watery channels of the Okavango Delta. You will also do a river cruise along the Chobe, and enjoy close encounters with hippo, giraffe, and many other animals that you might not have seen before. This exclusive tour makes a turn Zimbabwe's Victoria Falls town, where you can see one of the Seven Wonders of the World Mighty waterfalls.

Highlights:

- City tours
- Boat cruise
- Safari Walks
- Visit Victoria Falls
- Morning and Afternoon Game drives

Review

- • DEPARTURE: This tour departs from Windhoek
- • COUNTRY ('S): Namibia, Botswana, Zimbabwe (VicFalls) and Zambia
- • TOUR CODE: 10AC-WD-NAM-BOT-ZIM
- • RETURN: To Victoria Falls Airport
- • PASSENGERS: Minimum 1 Traveller and a Maximum of 24 Travelers per group
- • STYLE: Camping
- • MEALS: FB: Breakfast, Lunch and Dinner
- • VEHICLE: 2-3: Double Cab 4x4/ SUV 4 - 7 guests: Toyota Quantum/Landcruiser with a purpose-built trailer
- 8-14 guests: Toyota Dyna truck (a modified safari vehicle) / Iveco Daily 24-Seater

Included

Excluded

- Qualified Professional driver guide
- Vehicle and fuel
- Park entrance fees as per itinerary
- Passenger liability 15% VAT 2% tourism levy
- Airport transfers
- All Activities as Mentioned Included on itinerary.
- Accommodation with Breakfast, Lunch and Dinner
- 24/7 assistance locally
- Expenses of personal nature
- Entrance fees not mentioned in the itinerary.
- Meals not mentioned.
- Drinks at lodges and on road
- Travel- and cancellation insurance
- Visa
- Optional excursions and activities
- Tips for tour guides
- International & National flights and airport taxes
- Items not mentioned in the itinerary
- Border crossing payment (Clients pay for their own border pass)

Accommodation	Destination	Basis	Duration
Etosha Safari Campsite Gondwana Collection Namibia or similar	Etosha South	FB	2 Nights
Zuri Camp or similar	Tsumeb	FB	1 Night
Ngepi Camp Sites or similar	Divundu	FB	1 Night
Audi Camping or similar	Maun	FB	1 Night
Khwai Campsite or similar	Khwai Community Area	FB	2 Nights
Kwalape Safari Campsite or similar	Kasane	FB	1 Night
N1 Hotel & Campsite Victoria Falls or similar	Victoria Falls (Zimbabwe)	FB	1 Night

Key

FB: Full Board - Dinner, Bed, Breakfast and Lunch

Day 1: Etosha Safari Campsite Gondwana Collection Namibia, Etosha South (405.7km)

You will depart to Etosha National Park and stay 2 nights. The park's main characteristic is a salt pan so large it can be seen from space. Yet there is abundant wildlife that congregates around the waterholes, giving you almost guaranteed game sightings. At the same time, Etosha National Park is one of the most accessible game reserves in Namibia and Southern Africa, the concentration of big games around the waterholes makes game viewing incredibly rewarding. You might not even have to leave your rest camp to see lions, elephants, rhino and any number of antelope and zebra quenching their thirst

Included activities

- Afternoon Game drive

Overnight: Etosha Safari Campsite

Etosha South

Located just south of the boundary of Etosha National Park in northwestern Namibia, Etosha South makes up the southern region of this wild paradise. The area is comprised of a collection of world class private game reserves. The national park can be accessed via the southern entrance at Andersson's Gate. Visitors can catch a glimpse of a variety of wildlife including: lion, giraffe, elephant, white and black rhino, and a multitude of plains game. Popular activities include: enjoying an open 4x4 safari with an expert guide, half day or full day drives with the option of a picnic lunch with wine on the full day game drive.

Overnight: Etosha Safari Campsite Gondwana Collection Namibia [View iBrochure](#)

Set up under Mopane trees with loving care, this campsite offers guests many shady spots covered with lawn. Apart from showers, toilets and sink units there are several power points all over the site as well as mobile grills.

Camping guests are welcome to use the swimming pool of neighbouring Etosha Safari Camp (a two minutes' walk). And those who want to treat themselves to dinner after an exciting day are most welcome at the camp's Okambashu restaurant. The Oshebeena bar next-door, decorated in typical township style, is just the place for a little get-together in the midst of African joie de vivre. Only 9 km away from

Andersson gate, the camping site is the ideal basis for safari excursions into Etosha National Park.

Location: 10 km south of Andersson Gate on the C 38 (Etosha National Park).



Basis

Full Board - Dinner, Bed, Breakfast and Lunch

Day 2: Etosha Safari Campsite Gondwana Collection Namibia, Etosha South

Clients have breakfast, today will be a full day of safari game viewing allowing plenty of opportunities for good sightings and spectacular photographs. After breakfast at the lodge, we go out on our morning game drive.

Included activities

- Full day game drive

Overnight: Etosha Safari Campsite

Basis

Full Board - Dinner, Bed, Breakfast and Lunch

Day 3: Zuri Campsite, Tsumeb (343.6km)

Clients will grab early breakfast and depart to Tsumeb which is the largest town in the Oshikoto region and the closest urban centre to the renowned Etosha National Park, has been dubbed Namibia's "gateway to the north". It is also known for the famous Tsumeb mine, and as having the greatest number of minerals in one place in the world. The region is rich in exquisite semi-precious gemstones which can be seen in their full glory at the Tsumeb Museum.

Included Activities

- Visit to Museum

Overnight: Zuri Campsite

Tsumeb

Tsumeb is the largest town in the Oshikoto region and the closest urban centre to the renowned Etosha National Park. It has been dubbed Namibia's 'Gateway to the North'. Tsumeb is also known for the famous Tsumeb Mine, and as having the greatest number of minerals in one place in the world. The region is rich in exquisite semi-precious gemstones which can be seen in their full glory at the Tsumeb Museum. Visitors can stop in at the Arts & Crafts Centre, the Tsumeb Cultural Village, and the Old Mine, which documents Namibia's rich history, before making their way to the famous Etosha natural area. Don't miss the opportunity to take in the town's raw and beautiful scenery in a different way: go skydiving with the Tsumeb Flying Club for a thrill of a lifetime.

Overnight: Zuri Camp

Zuri Camp is located a short drive from the town of Tsumeb, Namibia, where guests will find shops, restaurants and an airport. The property offers luxurious off-track tents and spacious campsites. The tents are spacious and comfortable, equipped with two comfortable single beds, a fan, an ensuite bathroom and a furnished terrace. The campsites are spacious and nestled under a large Maroela tree with a small lawn. Close to the camping area is a large modern ablution building with hot water as well as an outdoor shower, with a large washup area behind the building. Outside lights in the tree ensure there is good lighting at night. Guests can make use of a large fully equipped camp kitchen or barbeque facilities for meal preparations. Activities in the area include hiking and horseback riding.



Basis

Full Board - Dinner, Bed, Breakfast and Lunch

Day 4: Ngepi Camp Sites, Divundu (521.7km)

Early Breakfast and then depart to The Okavango River .A visit to the Mahango Game Reserve Park, where, apart from animals, we will see huge baobabs. Today's episode is not too long and we should be there in the early afternoon. The whole road leads through Caprivi and the area of the Bwabata National Park. The route is decorated with road signs "beware of elephants". This is the route of the largest population of elephants migrating from Chobe to Zambezi.

Included Activities

- Afternoon Game Drive

Overnight: Ngepi Camp Sites

Divundu

Set roughly 200 kilometres east of Rundu on the southeastern banks of the great Okavango River, the small village of Divundu is a wonderful destination from which to explore the river, game parks and national reserves of the area. Visitors can enjoy fishing or bird watching boat safaris, or visit the Mahango Game Park, which is home to herds of elephant as well as hippo, buffalo, giraffes, antelope, and many other animals. The spectacular Popa Falls, a dramatic series of cascades - are a popular must-see attraction. Divundu is also the perfect base for adventures in Botswana and the Okavango Delta.

Overnight: Ngepi Camp Sites

Nestled along the banks of a beautiful river, Ngepi Camp Sites offer a unique camping experience for nature lovers and adventure seekers alike. With grassed camping areas, ample parking space for vehicles, trailers, caravans, and individual amenities at each site, Ngepi promises to be your home away from home. Each campsite boasts its own 220v AC solar-powered electricity point, ensuring guests can access all the modern comforts while still being immersed in nature. The river water taps and fireplace/braai areas add to the charm of the campsites, giving guests a taste of traditional camping with a twist. For those looking for a more secluded experience, Ngepi's Bush campsites are perfect. Surrounded by lush trees for shade, these sites offer privacy and tranquillity.



Basis

Full Board - Dinner, Bed, Breakfast and Lunch

Day 5: Audi Camping, Maun (430.9km)

Guests will grab early Breakfast and then depart to Maun. After checking in and freshening up they will go for their activity.

Included activities

- Afternoon game drive

Overnight: Audi Camping

Maun

Set on the banks of the beautiful Thamalakane River in northern Botswana, Maun is the third-largest town in this spectacularly scenic southern African country. Maun is

the starting point for most expeditions into the Okavango Delta and as a result, has developed into a bustling metropolis that is considered Botswana's tourism capital. Area attractions include a renowned riverboat that offers cruises up and down the Thamalakane River; the forest groves of the Maun Game Reserve; and Moremi Game Reserve, home to hippos, lions and rhinos. Maun also serves as the jumping-off point for many safaris and air charters as well as offering private 4x4 rentals. Don't miss the opportunity to visit the Nhaba Museum exhibiting the local history, art and culture of the Ngamiland region.

Overnight: Audi Camping

Located 12km from Maun, Audi Camping is on the road into the Moremi Game Reserve. The accommodation is ideal for self-drive stopovers, a starting point for great adventures, a respite from the bush and an excellent place to relax, drink, and eat. There are shaded camping areas, some of which have power points. We have security at night, open-air showers with hot water and toilets and sites for washing clothes/dishes. The property can also arrange transfers from town.

Basis

Full Board - Dinner, Bed, Breakfast and Lunch

Day 6: Khwai Campsite, Khwai Community Area (111.3km)

After breakfast the clients will depart to Khwai Guest House situated in the Moremi. Throughout the drive to Khwai clients will have the opportunity to see and take pictures of animals roaming freely. The Khwai area of the Okavango lies along the northern boundary of the Moremi Game Reserve. This is an unfenced boundary allowing wildlife to move freely between the woodlands in the wet season when water is plentiful and back to permanent rivers and lagoons in the dry season.

Included Activity

- Moremi Game Drive (Afternoon)

Overnight: Khwai Expeditions Camp

Khwai Community Area

The Khwai area of the Okavango lies along the northern boundary of the Moremi Game Reserve. Khwai Community Area has unfenced boundaries allowing wildlife to move freely between the woodlands in the wet season when water is plentiful and back to permanent rivers and lagoons in the dry season. The Khwai area offers the same wildlife experience as the Moremi Game Reserve with the added advantage of being a private concession, which means the ability to do walking safaris and night drives. Don't miss the opportunity to soak up beautiful views of the scenic landscape and spot an array of wildlife.

Overnight: Khwai Campsite

Khwai (formerly known as North Gate) is a group of sites in the Moremi Game reserve. The area is well known for its extensive variety of animals and the San Bushmen, who have a growing community nearby. Campsites are grouped together with their own fireplaces but sharing two ablution blocks with solar lights and ensuite showers and toilets. The campsites are not fenced, be alert.



Basis

Full Board - Dinner, Bed, Breakfast and Lunch

Day 7: Khwai Campsite, Khwai Community Area

Guests will have breakfast and then can watch ladies weaving baskets in the village and observe carpenters at work, as well as visit the local curio shop where all the baskets and woodcarvings are available for sale.

Included activity

- Walking safaris and night drives

Overnight: Khwai Expeditions Camp

Basis

Full Board - Dinner, Bed, Breakfast and Lunch

Day 8: Kwalape Safari Campsite, Kasane (264.8km)

Cross the border into Botswana. A boat tour is a must, watch the elephants swim. Chobe is easy to explore with your own vehicle but you could also book a game drive via the lodge in an open safari vehicle.

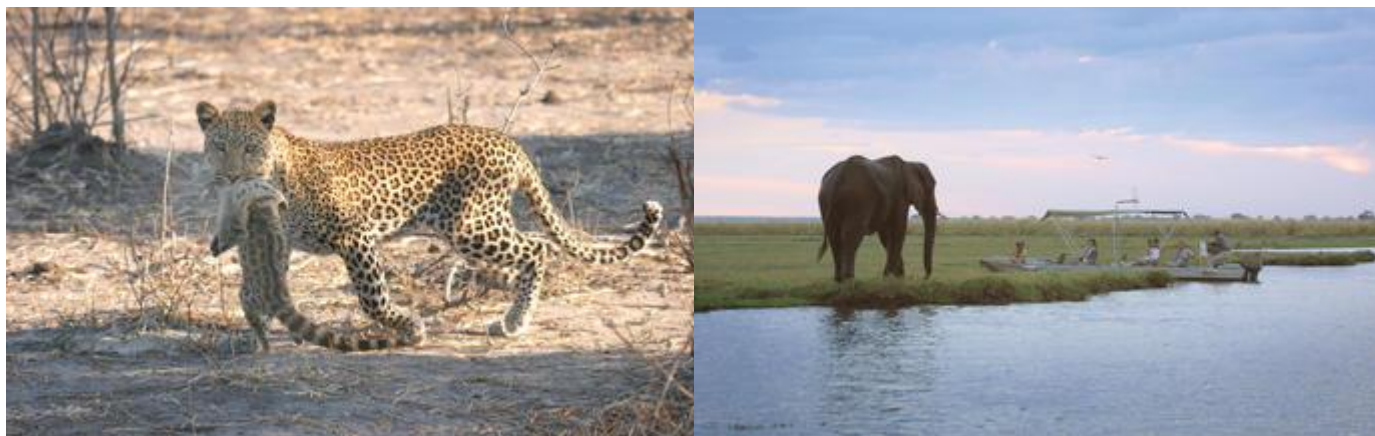
Included activities

- sunset cruise down the Chobe River and visiting a local village

Overnight: Kwalape Safari Campsite

Kasane

Tucked away in the northeastern corner of Botswana, on the banks of the famous Chobe River, the scenic little town of Kasane rests on the doorstep of the spectacular Chobe National Park. There are no boundary fences separating the village from the park and game such as elephant and hippo are often spotted roaming around the town. If on the lookout for elusive game, pay a visit to the Sedudu Valley Road, where large dead trees provide temporary homes for leopards. Within Kasane, an ancient baobab tree stands on display, once serving as a local prison. Visitors can look forward to a multitude of activities including: enjoying a game drive through the park, taking a sunset cruise down the Chobe River, visiting a local village or jumping on a day trip to the breathtaking Victoria Falls.



Basis

Full Board - Dinner, Bed, Breakfast and Lunch

Day 9: N1 Hotel & Campsite Victoria Falls, Victoria Falls (Zimbabwe) (87.4km)

Victoria Falls which is in the largest water Fall in the world Resting on the southern banks of the Zambezi River at the western end of the eponymous falls, this popular tourist town is compact enough to walk around and makes an ideal base for travellers exploring the seventh wonder of the world, the unfathomably vast Victoria Falls. After arrival clients will go on the game drive and get back for dinner.

Included Activity

- Visit the Victoria Fall-Walking Tour
- Zambezi Boatcruise 2 hours

Overnight: N1 Hotel & Campsite Victoria Falls

Victoria Falls (Zimbabwe)

Victoria Falls is one of the world's most impressive waterfalls. It is set on the magnificent Zambezi River which creates the border between Zambia and Zimbabwe. These spectacular falls can be easily visited and viewed from the Zimbabwean side. Considered to be the world's widest waterfalls, Victoria Falls measures an impressive 1708 metres in width. The small town of Victoria Falls, which lies adjacent to the waterfalls, serves as a great base from which to explore the many attractions this area of Zimbabwe has to offer. The surrounding area provides a wide range of adrenalin-filled activities for adventure lovers. Visitors can

look forward to an array of wonderful activities including: scenic flights, micro lighting, white water rafting, bungee jumping, kayaking, and once-in-a-lifetime expeditions into the incredible Chobe National Park.

Overnight: N1 Hotel & Campsite Victoria Falls

The N1 Hotel provides all the basic necessities for a good nights sleep, from en-suite showers to air conditioned rooms. The N1 Hotel is conveniently located with-in walking distance of Victoria Falls, curio shops and shopping malls in the town centre. The hotel is open 24 hours a day making late check-ins hassle free.



Basis

Full Board - Dinner, Bed, Breakfast and Lunch

Day 10: End of Itinerary

Have breakfast and drive towards the airport and fly home.

Terms and Conditions

Please view this link for our terms and conditions:

<https://safariworldtours.com/terms-conditions>

Urgent Contact Numbers

Company Name	Cell Number	Email Address	Contact Person
Safari World Tours	0818211521	info@safariworldtours.com	Clarence Goagoseb
	0813199146	enquiries@safariworldtours.com	Emelda Naris

Travel Information



Located in southwestern Africa, Namibia boasts a well-developed infrastructure, some of the best tourist facilities in Africa, and an impressive list of breathtaking natural wonders. Visitors can explore the capital of Windhoek and discover the lovely coastal town of Swakopmund boasting remnants of the country's German influence, reflected in the architecture, culture, cuisine and the annual Oktoberfest celebrations. To properly appreciate this extraordinary country, you will have to venture out of the cities to explore the remarkable natural landscapes Namibia has to offer. These include: the impressive Fish River Canyon; the vast Etosha National Park teeming with abundant wildlife, such as lions, desert-adapted elephants and the Hartmann's Mountain Zebra; the hauntingly beautiful Kalahari Desert; and of course the Namib Desert stretching for over 2000 km along the magnificent Atlantic Coast. Namibia is an ideal destination for travellers seeking an unforgettable African experience in a uniquely beautiful untamed wilderness.



Situated in the southern reaches of Africa, Botswana is renowned for its pristine wilderness areas characterised by deep lagoons, wetlands, lush palms, rugged hills and desert plains. The country's primary tourist drawcard is undoubtedly the vast red expanse of the Kalahari Desert and its remarkably beautiful Okavango Delta, the largest inland delta in the world. These natural wonders provide a tranquil haven for an abundance of African wildlife to thrive. Other highlights include the impressive Makgadikgadi Salt Pans, where visitors are privy to massive zebra migrations during the flood season; the Savuti plains, which host a significant pride of lions; and the Tsodilo Hills, where 4500 rock paintings form a unique record of human settlement over many millennia.
