



**SAFARI**  
WORLD TOURS

# 5-DAYS MURCHISON FALLS & KIBALE FOREST LUXURY SAFARI(CAMPING)

[www.safariworldtours.com](http://www.safariworldtours.com)

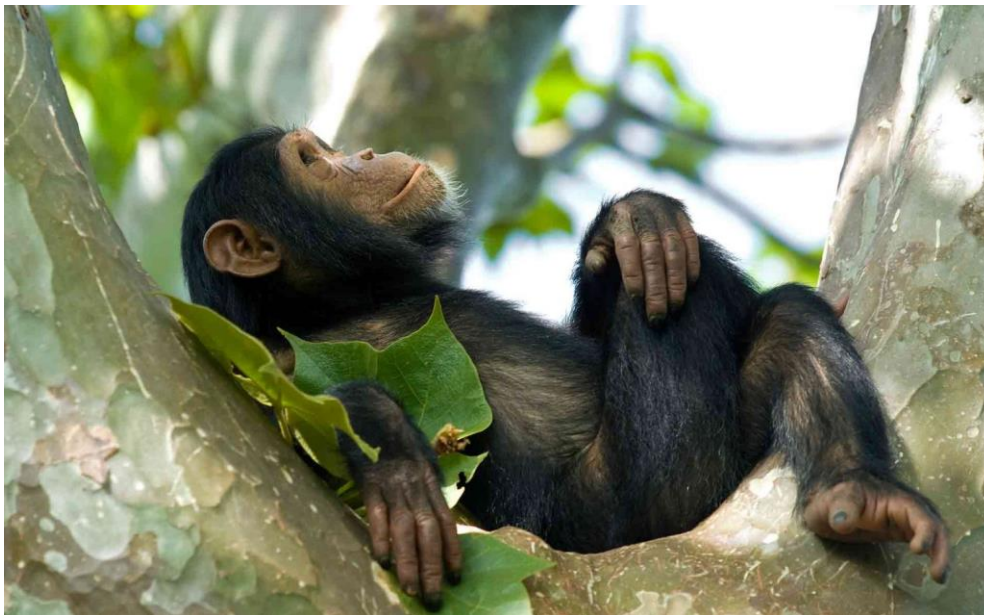


## TOUR DETAILS:

On this trip you will have the opportunity to explore the wonderful wildlife of Uganda, with the chance of visiting the top of falls in Murchison falls national park as well as meeting our close relatives the chimpanzees in Kibale forest national park. This Safari is filled with great adventure.

## TOUR HIGHLIGHTS:

- Rhino tracking-Ziwa Rhino Sanctuary en route to Murchison Falls National Park
- Hiking Top of the falls-Murchison Falls
- Boat Cruise along the Nile Delta – to Bottom of the falls
- Game Drive within Murchison Falls Park
- Mountain gorilla tracking and spending one hour among a selected gorilla family.
- Countryside road trip in an open-sided 4×4 vehicle & pop-up roof 4×4 vehicle.





## TRIP FACTS:

Destinations	Accommodation	Nights	Meals
<b>Murchison Falls National Park</b>	Chobe Safari Lodge Uganda	2 Night	D,B&B
<b>Fort Portal</b>	Kyanninga Lodge	2 Night	D,B&B

## ITINERARY (DAY BY DAY):

### DAY 1 - KAMPALA TO MURCHISON FALLS NATIONAL PARK

#### Accommodation: Chobe Safari Lodge Uganda

On this day our driver guide will warmly welcome and transfer you to Murchison Falls National Park with a stopover at Ziwa Rhino Sanctuary for Rhino Trekking and later continue to Murchison Falls National Park.

**Duration: 3 hours.**





## DAY 2: MURCHISON FALLS NATIONAL PARK

### Accommodation: Chobe Safari Lodge Uganda

Murchison Falls National Park, Murchison Falls National Park, Western Region You will go for a Game drive where you will see Elephants, Lions, Giraffes, and many more. Later return to the hotel for breakfast and lunch. After lunch, you will go for a boat cruise to the base of the falls where you will see hippos, crocodiles, Uganda Kobs and many bird species like Goliath heron, Egyptian goose, pelican bee-eater, kingfisher, and hornbill.

After the boat cruise you will hike to the top of the fall and you will meet your driver guide and take your hotel At Chobe Safari Lodge Uganda.



## DAY 3: TRANSFER TO FORT PORTAL

### Accommodation: Kyaninga Lodge

After an early morning breakfast, you will be transferred to Fort Portal where you will spend time at Nkuruba nature reserve.

**Duration: 6 hours**



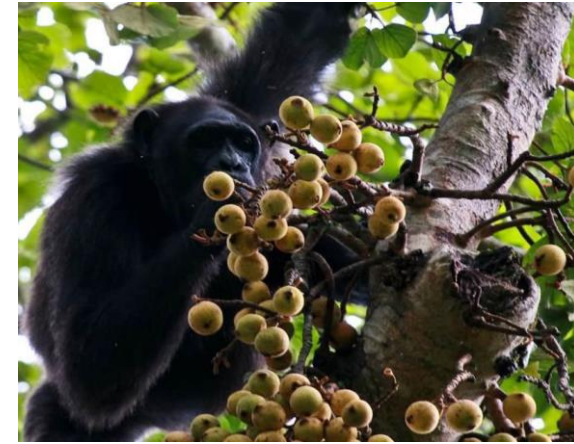


## DAY 4: CHIMPANZEE TRACKING AND CULTURAL WALK

### Accommodation: Kyaninga Lodge

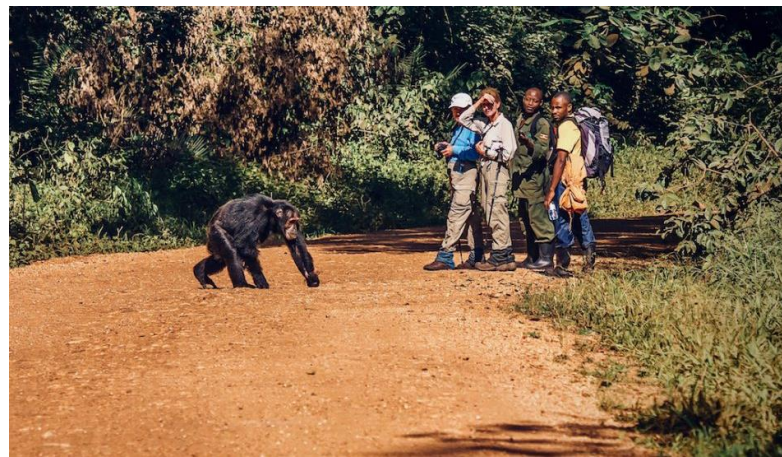
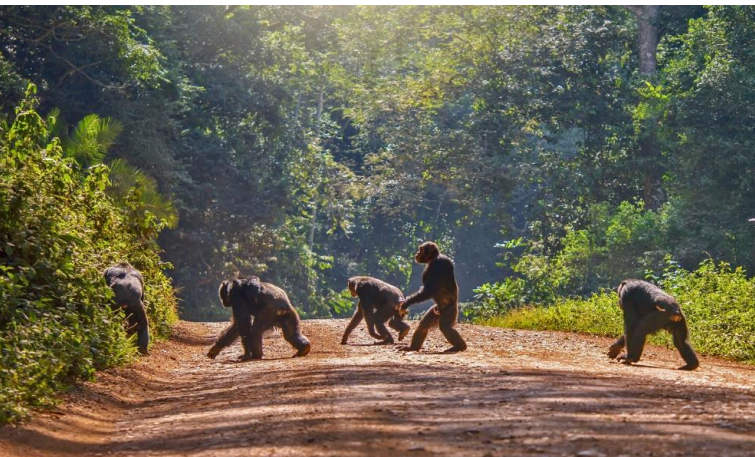
Our driver guide will meet and transfer you to UWA offices for briefing in Kibale National Park where you will be briefed about the activity. Chimpanzee tracking approximately takes about 3 hours and you will sight lots of other primates like the L'host monkeys, vervet monkeys, Red tailed monkeys and a variety of bird species.

Later after tracking have lunch and proceed for cultural walk in the neighbourhood of Kibale national park where you will experience the different life style people live.



## DAY 5: TRANSFER TO AIRPORT IN ENTEBBE/ KAMPALA

On this day you will be transferred back to Entebbe/ Kampala to catch up your flight back home depending on your flight back home.





## INCLUDE:

- Qualified professional driver guide
- Vehicle / fuel
- Park entrance fees as per itinerary
- Passenger liability 15%
- VAT 2% tourism levy
- Airport transfers
- Accommodation
- Breakfast, Lunch and Dinner for the Client

## EXCLUDE:

- Expenses of personal nature
- Entrance fees not mentioned in the itinerary
- Meals not mentioned
- Drinks at lodges and on road
- Optional excursions and activities
- Tips for tour guides
- International flights and airport taxes
- Items not mentioned in the itinerary

## HOW TO BOOK AND HOW TO PAY:

To reserve this tour, a payment of 30% of the total price must be made at the time of reservation. The balance of 70% can be made before the departure of your tour. Your deposit can either be made through a Bank Transfer, with the addition of a 45 US Dollar fee or by Credit Card which incurs an additional bank charge of 3.5%.