



3 DAYS QUEEN ELIZABETH NATIONAL PARK SAFARI  
(CAMPING)



## TOUR DETAILS:

This 3 days safari will take you to Queen Elizabeth National Park is situated astride the equator in the south western Uganda. It's the second largest national park in Uganda covering an area of 1,978 square Kilometers. The park has varied habitats that include grass Savannah, dense bushes, forest, swamp and lakes. The park offers magnificent game viewing experiences, a memorable launch trip and spectacular bird watching opportunities which you will participate in during your safari.

## TOUR HIGHLIGHTS:

- Visiting Queen Elizabeth National Park
- Tree planting with the Rwenzori communities
- Game drives viewing Hyenas, Elephants, Bush pigs, Lions (including the famous climbing lions).
- 2 hours thrilling cruise trip along the Kazinga channel





## TRIP FACTS:

Destinations	Accommodation	Nights	Meals
Queen Elizabeth National Park	UWA Mweya Campsite	2 Nights	FB

## ITINERARY (DAY BY DAY):

### DAY 1: ENTEBBE TO QUEEN ELIZABETH NATIONAL PARK (436.0 KM)

**Accommodation: UWA Mweya Campsite, Queen Elizabeth National Park / Similar**

Guest will be picked up at their accommodation after breakfast, you will embark on an exciting drive to Queen Elizabeth National park situated in the shadows of Mt. Rwenzori with several stops along the way for lunch in Fort portal, relaxation, equator and landscape viewing. You will reach the park in the evening and check in to Hotel/Lodge for relaxation, dinner and overnight stay.

**Meals: Lunch and Dinner (Other drinks not included)**

**Included Activity: Rhino Drive**





## DAY 2: QUEEN ELIZABETH NATIONAL PARK

**Accommodation: UWA Mweya Campsite, Queen Elizabeth National Park / Similar**

6:30 Early morning breakfast at UWA Mweya Campsite.

7:00 Depart for the Kasenyi sector of Queen Elizabeth National Park for a morning game drive. The Kasenyi savannah offers a classic safari experience, with a good chance of spotting lions, which are drawn by the huge herds of Uganda Kob. You will also have the opportunity to spot elephant, warthog, waterbuck and possibly even the elusive leopard.

12.00 Take a break at the Queen's Pavillion Visitor Information Centre for a packed lunch whilst enjoying the panoramic view of the park and surrounding area.

13:00 Set off on the 27km long Crater Explosion Drive, evidence of the Albertine rift's volcanic past. The drive affords stunning views of the enormous craters, the Rift Valley Escarpment and the Kazinga Channel, set against the stunning backdrop of the Rwenzori Mountains.

15:00 Finish the Crater drive at the Kazinga Channel, where you will join the 2 hour launch cruise. From the boat you may see buffalo, elephants, monitor lizards and vast numbers of different bird species as well as numerous hippos and crocodiles in the water.

18.00 Arrive back at UWA Mweya Campsite for a second night.

**Meals: All meals included Drinking water (Other drinks not included)**

**Included Activity: Game Drive and Boat Cruise**





## DAY 3: QUEEN ELIZABETH NATIONAL PARK TO ENTEBBE (436.0 KM)

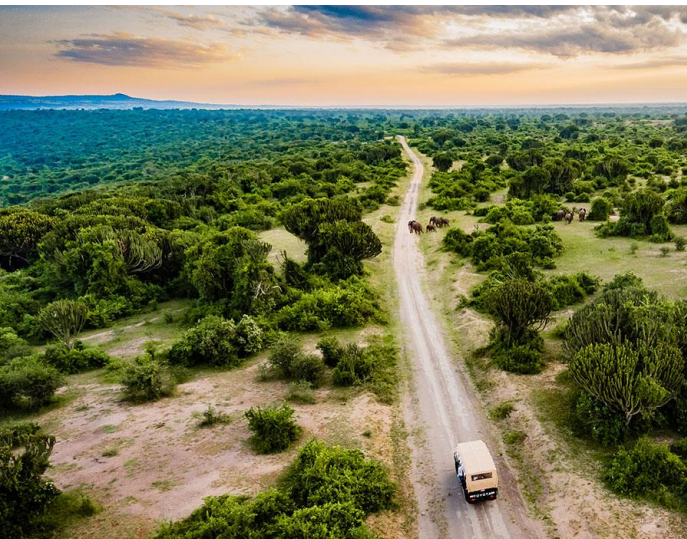
This is the last day of your tour. Guest will have breakfast and drive then embark on an exciting road trip to Entebbe international airport with several stopover for Lunch, landscape and equator viewing.

**Meals: Breakfast**

**End of Tour**

**Overnight: UWA Mweya Campsite**

UWA Mweya Campsite is located within the Queen Elizabeth National Park in the south end of the Mweya sector. Accommodation at the campsite features a campground where guests can pitch tents as well as a pit toilet. There is also a nearby restaurant where guests can eat if they do not want to cook for themselves..



## **INCLUDE:**

- Qualified professional driver guide
- Vehicle / fuel
- Park entrance fees as per itinerary
- Passenger liability 15%
- VAT 2% tourism levy
- Airport transfers
- Accommodation
- Breakfast, Lunch and Dinner for the Client

## **EXCLUDE:**

- Expenses of personal nature
- Entrance fees not mentioned in the itinerary
- Meals not mentioned
- Drinks at lodges and on road
- Optional excursions and activities
- Tips for tour guides
- International flights and airport taxes
- Items not mentioned in the itinerary

### **HOW TO BOOK AND HOW TO PAY:**

To reserve this tour, a payment of 30% of the total price must be made at the time of reservation. The balance of 70% can be made before the departure of your tour. Your deposit can either be made by means of a Bank Transfer, with the addition of a 45 US Dollar fee or by Credit Card which incurs an additional bank charge of 3.5%.