



SAFARI
WORLD TOURS

17 DAYS TOUR TO NAMIBIA, BOTSWANA & VICTORIA FALLS TOUR (CAMPING AND LODGING)

www.safariworldtours.com

TOUR DETAILS:

This 17 days Tour to Safari is the way to really get to know part of Africa that commences in the continent's adventure which starts in Windhoek and ends at Victoria Falls. In between, you savour the peace, tranquillity and splendour of Botswana, one of the world's greatest wildernesses. Namibia has an excellent highway infrastructure, beautiful scenery and very little other traffic outside the few major towns – ideal for enjoying your time behind the wheel. You then end at the Victoria Falls, a massive sheet of deafening spray on the Zambezi River.

TOUR HIGHLIGHTS:

- Climb the Sossusvlei Dunes
- Scenic flight over the Skeleton Coast
- Encounter the tribal Himba, Zemba & Bushmen
- Safari in Etosha and Chobe National Parks
- Explore the Okavango Delta by dugout canoe and flight
- Zambezi sunset cruise
- See Victoria Falls, Zimbabwe

TRIP FACTS:

DESTINATIONS	ACCOMMODATION	NIGHTS	MEALS
Lodging Windhoek	Hotel Thule	1 Night	D&B
Lodging Sossusvlei	Desert Camp	1 Night	D, B&B
Lodging Swakopmund	Swakopmund Luxury Suites	1 Night	D, B&B
Camping Palmwag	Grootberg Lodge	1 Night	D, B&B
Camping Etosha South	Taleni Etosha Village	1 Night	D, B&B

Camping Etosha South	Etosha Safari Lodge Gondwana Collection Namibia	1 Night	D, B&B
Lodging Tsumeb	Minen Hotel	1 Night	D, B&B
Camping Mahango Game Reserve	Shametu River Lodge	1 Night	D, B&B
Lodging Maun	Okavango River Lodge	2 Nights	D, B&B
Camping Moremi Game Reserve	Third Bridge Camp	1 Night	D, B&B
Camping Khwai Community Area	Awimbawe Guest House	2 Nights	D, B&B
Camping Chobe River Front	Chobe Game Lodge	2 Nights	D, B&B
Lodging Victoria Falls, Zimbabwe	Victoria Falls Rest Camp	1 Night	B&B

ITINERARY (DAY BY DAY):

DAY 1 – AIRPORT TO WINDHOEK 7.6KM

Guest will be picked up at the airport and depart to Windhoek to go check in at their accommodation and discuss about the itinerary and after lunch guest will go on a city tour which will take up to approximately 2 hours and will be back at their accommodation.

Overnight: Hotel Thule

Hotel Thule is an upmarket, 25 room hotels, and located 5 minutes from the city centre of Windhoek. It offers conference facilities and a boardroom, a lapa perfect for functions and special events, and a restaurant serving fine Namibian cuisine. Hotel Thule is renowned for its sundowners, being perched on a hilltop, thus offering stunning views over the city of Windhoek.,



DAY 2 – WINDHOEK TO SOSSUSVLEI 276KM

Guest will depart in the morning from Windhoek and depart to Sossusvlei area. Along the way guest will have a stop at the next town Rehoboth where the guest will have the opportunity to buy some snacks and a lunch box as the guide will pull over by a big tree around 12h00-13h00 for lunch. After arrival guest will have leisure time before going on a Sundowner drive to Elim dune around 17h30 or 18h00. The next morning guest will have early breakfast and go into the park for Sossusvlei Excursion whereby they will be back around 12h00 for a quick lunch to depart to their next destination.

Desert Camp is situated just 5 km from the entrance gate to Sossusvlei and Sesriem Canyon in the Namib Naukluft Park. Nestled under centuries old camel thorn trees, Desert Camp offers unsurpassed views over the Desert landscapes and surrounding mountains – An absolute must for the nature lover and photographer!

The 28 affordable self-catering accommodation units are equipped with an en-suite bathroom, shaded veranda with a fitted kitchenette, barbeque, power points and an adjacent parking area. Each air-conditioned room features twin beds and a fold-out sleeper couch to accommodate 2 small children (under 12) free of charge when sharing with 2 full paying adults. Utility boxes with most utensils needed are available at reception and fresh food supplies can be ordered daily.

Overnight: Namib Desert Campsite Gondwana Collection Namibia

These campsites are located under acacia trees on the bank of a dry riverbed and offer beautiful views of the 'fossilized' dunes of the primeval Namib. They are equipped with electricity, water, grill area and windbreak and share several communal bathroom facilities. Just a few minutes' drive from the road to Sesriem, this camping site is ideally suited for nature lovers who want to experience Sossusvlei and at the same time love the silent starlit nights of the Namib Desert.



DAY 3: SOSSUSVLEI TO SWAKOPMUND 298KM

Guest will have a fresh shower after lunch and depart to Swakopmund from Sossusvlei, Swakopmund is the Coastal town of Namibia with cold fresh air. Upon arrival guest will have time to rest and then refresh themselves for Dinner. The next morning the clients will do Quad Biking before departing to.

Overnight: Swakopmund Luxury Suites

Swakopmund Luxury Suites offers stylish and modern accommodation situated in the heart of Swakopmund. The accommodation is provided in light and airy rooms, all comfortably furnished. Crisp white interior and earthy elements, high quality bedding and stylish en-suite bathrooms define the rooms. All of which include TVs with satellite channels, air-conditioning and tea and coffee-making facilities and the terrace offers a peaceful place for guests to relax and enjoy the fresh air. Breakfast is included and is served at Café Bojo.



DAY 4: SWAKOPMUND TO PALMWAG 436KM

This morning clients will freshen and depart after breakfast in the morning to Palmwag. Palmwag is a nature reserve idyllically located along a palm-lined tributary of the Uniab River. Water is scarce in this area, so the river's presence often lures elephants closer to the camps. Palmwag is situated halfway between Swakopmund and Etosha and is the ideal base from which to see the sights of the Kunene region or embark on one of the many local hiking trails. Upon arrival clients will go on a game drive.

Overnight: Grootberg Lodge

14 Twin and 2 family rock and thatch chalets gaze out over the Klip River Valley, where Black Eagles hunt just below your private deck. Two family units provide enough space for parents and two children to share comfortably.



DAY 5: GROOTBERG TO ETOSHA NATIONAL PARK 289KM

Guest will depart today after a fresh shower to Etosha and on arrival clients will get lunch and after Lunch, if time permits, enter Etosha for an afternoon game drive. Depending on how often you stop today, On entering the park, the first stop would be Okaukuejo where you pay your entry fee and I suggest you pop in at the local shop to purchase some drinks and snacks and most importantly, a map of Etosha which will show you all the waterholes along the way. Etosha has lions, giraffes, rhinos, zebras, springbok and elephants. This on top of many lesser and common plains herds, and abundant birds makes game viewing in Etosha.

Overnight: Taleni Etosha Village

Affordable Luxury at Etosha National Park near Okaukuejo

Situated only 2km from the Andersson entrance gate to Etosha National Park, Etosha Village uniquely combines affordability with comfort, style and exquisite cuisine.

The 45 luxury individual suites offer a fully air-conditioned bedroom with an en-suite bathroom and a patio to enjoy the beauty that surrounds you. Two small children (under 12) can be accommodated with their parents on a fold-out sleeper couch in the unit. Facilities include an open-plan bar with big screen television, 2 sparkling pools plus a kiddie pool, a restaurant serving delectable cuisine as well as a fully stocked utility and curio shop. Explore Namibia's animal kingdom with a morning or full day Guided Game Drives to Etosha National Park.

Enjoy the Walking Trails on our reserve where various small game can be spotted from the lookout decks and hides.

Sundowner Drives and Stargazing Sessions allow guests to experience the magic of our sunsets and famous star studded skies.

Let our team whisk you away to an enchanted venue in the Mopane Forest for a magnificent Boma Dinner Experience for your special function or private dinner.



DAY 6: ETOSHA NATIONAL PARK AREA 9.5KM

This morning guest will have breakfast and go on the full day game drive inside the park, as they are on the drive the guide will have a stop at Halali around 12h00-13h00 for lunch and after lunch go on their game drive journey until afternoon.

Overnight: Etosha Safari Lodge Gondwana Collection Namibia

Etosha Safari Lodge is located 10 km south of Andersson Gate on the C 38 (Etosha National Park).

Sip on a drink while watching the ruby sun dip into the mopane woodland. Perched on a hill with expansive views, this stylish lodge offers 65 chalets that provide a peaceful base from which to explore the animal bounty of Etosha National Park.

A shuttle service operates between Windhoek and Etosha Safari Lodge and Camp (on request).

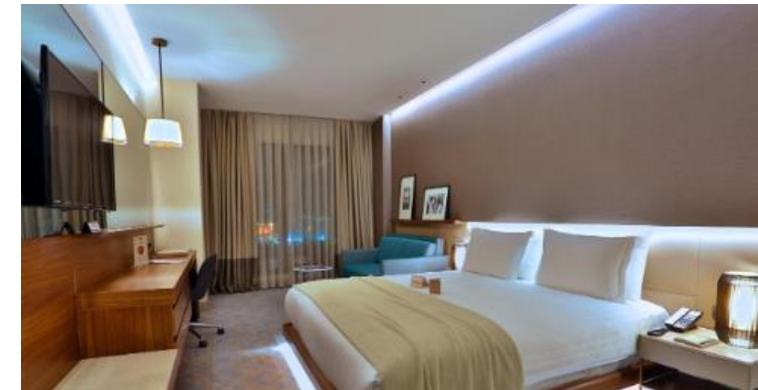


DAY 7- ETOSHA TO TSUMEB 343.6KM

Guest will get early breakfast and depart to Tsumeb which is the largest town in the Oshikoto region and the closest urban centre to the renowned Etosha National Park, has been dubbed Namibia's "gateway to the north". It is also known for the famous Tsumeb mine, and as having the greatest number of minerals in one place in the world.

Overnight: Minen Hotel

The Minen Hotel, a well situated garden hotel in the heart of Tsumeb. Famous around the country and even further afield for the natural atmosphere, wild garden, traditional German cuisine and excellent hospitality. Our 100 year-old oasis in the north of Namibia is the perfect stop-over for travellers to Namibia's famous Etosha National Park and the Caprivi, or simply just for a few quiet days away from home.



DAY 8: TSUMEB TO MAHANGO GAME RESERVE 521.9KM

Clients will get morning Breakfast and depart to Bordering Botswana, the small Mahango Game Park provides a convenient stopover between Rundu and Katima Mulilo. It forms part of the beautiful Bwabwata National Park. The park's landscape is characterised by woodlands, vast floodplains of the Okavango River basin known as omurambas and the Kavango River. It is home to a reported 99 species of including many elephants, lion, leopard and a variety of antelopes including the red lechwe, sable and roan.

Overnight: Shametü River Lodge

Shametü River Lodge enjoys luxurious solitude on the edge of the Okavango river with a magnificent view of the unique Popa Falls. The lodge is halfway between the major gems of Southern Africa, the Okavango Delta and the Victoria Falls, making it an ideal stopover to unwind during your journey. However, it should not only be a stopover, Shametü River Lodge is in a proximity of a few of Namibia's untamed National Parks the Buffalo core area inside the Bwabwata National Park and Mahango National park.

We will be offering affordable Chalets and Tented chalets with breathtaking views of the unspoilt Okavango river and the thundering Popa Falls. A true African experience! There are 4 luxury chalets, 4 luxury tented chalets and 7 standard chalets. All units have electricity, hot water showers and Wifi.

Shamet River Lodge is already known for their "five star" camping experience with green grass and shaded trees. There are eight campsites each with their own ablution blocks offering hot water, kitchenette, wifi and electricity facilities.



DAY 9: MAHANGO GAME RESERVE TO MAUN 285.1KM

Accommodation: Okavango River Lodge, Maun / Similar

Guests will grab early Breakfast and then take a short drive to Island Safari Lodge situated in Maun. After checking in and freshening up In the Afternoon the clients will depart for a Mokoro Excursion (for 2 hours) After this activity clients will get back and the lodge and get ready for Dinner.



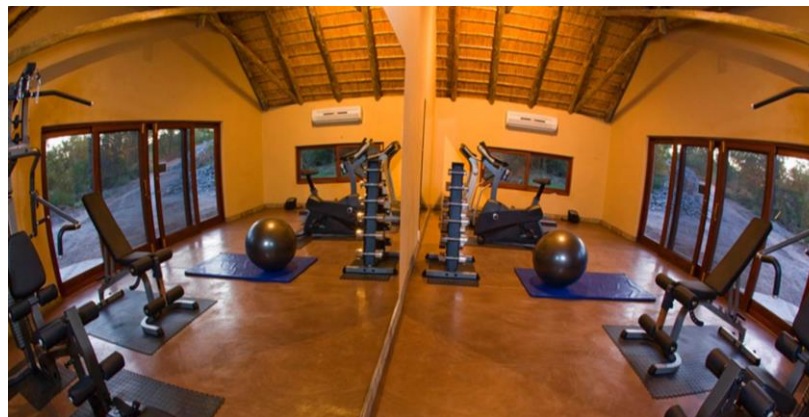
DAY 10: MAUN AREA

Clients will grab early Breakfast and then go on the game drive. And will be back around lunch and after lunch have free time.

Overnight: Okavango River Lodge

Welcome to Okavango River Lodge Backpackers & campsite. Sitting on the banks of the Thamalakane River, we can boast the largest river frontage as well as being one of the oldest watering holes in Maun.

We offer cool ensuite chalets. We have 3 x family accommodation, 1 x triple, and 2 x double chalets. We also have a campsite along the river under the shady acacia trees. We also have 8 x bedded twin tents with shared ablution facilities. Activities on offer are boating, mokoros and Moremi day trips. We welcome families and children of all ages.



DAY 11: MAUN TO MOREMI GAME RESERVE 432.3KM

This Morning Clients will freshen up and depart to Moremi area, which is Situated in the east of the Okavango Delta, Moremi Game Reserve ranks as one of the most beautiful reserves in Africa. It covers more than 4871 square kilometres of pristine wilderness, and the varied terrain includes savannah, winding waterways, and dense forest. This Area has wildlife that the guest can see on the Game Drive upon arrival in the afternoon.

Overnight: Third Bridge Camp

3rd Bridge Camp is a small, intimate camp of 5 Meru tents accommodating a maximum of 10 guests in comfort and style. The guest area consists of a central mess tent, outside fire-pit, reminiscent of a bygone age, cuisine is tasteful safari fare- simple, yet delicious, often prepared on the open fire.

The tents have been positioned to ensure privacy and a modest level of exclusivity throughout the camp and each tent sits on a platform, with stunning views over the Channel. The tents are large and spacious with en-suite facilities including flush toilet and safari shower.

3rd Bridge offers a boat cruise into the waterways exploring the deep water lagoons, the sinuous channels passing numerous islands. Experience guides who will take you on game drives in this game rich area conduct activities. Due the very diverse vegetation (riverine forest, floodplain, Mopani forests) the wildlife is spectacular; elephant, buffalo, hippo, giraffe, lechwe, zebra, lion, leopard, cheetah and wild dog to name a few.



DAY 12 – MOREMI TO KHWAI COMMUNITY AREA 111KM

After breakfast the clients will depart Awimbawe Guest House which is situated in the Moremi. Throughout the drive clients will have the opportunity to see and take pictures of animals roaming freely.

The Khwai area of the Okavango lies along the northern boundary of the Moremi Game Reserve. This is an unfenced boundary allowing wildlife to move freely between the woodlands in the wet season when water is plentiful and back to permanent rivers and lagoons in the dry season.

Overnight: Awimbawe Guest House

situated overlooking the Khwai River. Situated on the outskirts of the traditional village of Khwai and on the border of Moremi Game Reserve, the camp offers guests the perfect base from which to explore the wildlife and culture of this unique habitat.

Accommodating 12 guests in 6 en-suite rooms Awimbawe Guest House is designed in the style of the classic container camp of days gone by. This guesthouse is ideal for clients that would like to be more secure and that would not like to sleep in tented room. With the Khwai River forming a natural border between the world-famous Moremi Game Reserve and Khwai Concession, animals can travel freely through this vast unfenced wilderness. Situated on the river overlooking the Moremi and with access to both these magnificent wildlife areas, Awimbawe Guest House is focused on delivering an exceptional wildlife experience to our guests.



DAY 13: KHWAI COMMUNITY AREA TO CHOBE RIVER FRONT 9KM

Accommodation: Chobe Game Lodge, Chobe River Front / Similar

Clients will have a game drive throughout Chobe and its beautiful landscape across the challenging Magwikwe Sand point, which was the shoreline of the ancient inland sea, visit the Makgadikgadi Lake. Its deep sand, so in the wet season, it becomes impassable. After arrival clients will check in and prepare for dinner.



DAY 14: CHOBE RIVER FRONT

Clients will wake up for breakfast and then have a full day game drive in the Chobe National Park. Expected animals to see are lion, wild dog, cheetah, leopard, giraffe, bushbuck, blue wildebeest, and huge numbers of hippo.

Clients will return around 17h00 after a long day of game viewing and will have a goodnight sleep after long day.

Overnight: Chobe Game Lodge View iBrochure

Counter-balancing the wilderness are restful, air conditioned, en-suite lodgings. Graceful high arches quarry tiled floors and barrel-vaulted ceilings create an atmosphere of cool tranquillity.

Other facilities include a large swimming pool with terrace, a riverside boma area, a stylish bar with an outside terrace, an expansive deck offering magnificent views over the Chobe River as well as conference facilities for business travellers. All meals are catered for in various locations throughout the lodge including the terrace, boma and riverfront deck.

Each of Chobe Game Lodge's 4 luxury suites has an individual plunge pool set on a private terrace with breath-taking panoramic views of the endless landscape and open plains. Graceful high arches quarry tiled floors and barrel-vaulted ceilings create an atmosphere of cool tranquillity. All 46 rooms are tastefully furnished, each room with hand crafted Rhodesian teak furniture and walls decorated with original African carvings and paintings.



DAY 15: CHOBE TO VICTORIA FALLS 185.9KM

Clients will depart from Chobe to Victoria Falls which is in the largest water fall in the world. Resting on the southern banks of the Zambezi River at the western end of the eponymous falls, this popular tourist town is compact enough to walk around and makes an ideal base for travellers exploring the seventh wonder of the world, the unfathomably vast Victoria Falls. After arrival clients will go on the game drive and get back for dinner.

Overnight: Victoria Falls Rest Camp

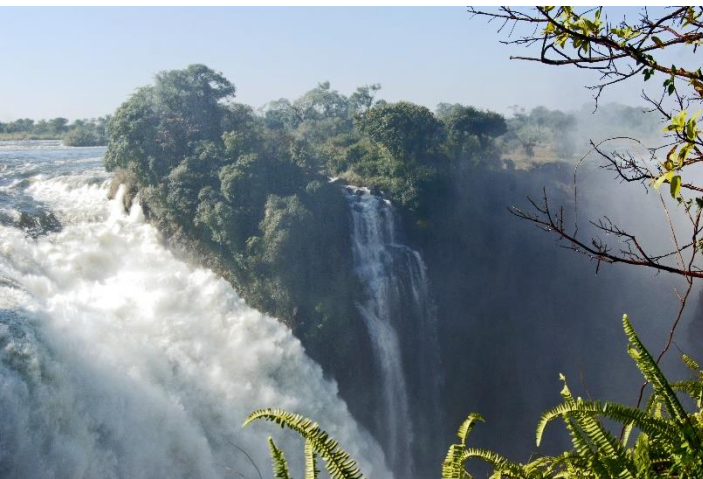
Victoria Falls Self Catering and Camping Accommodation at the Vic Falls Restcamp is the best budget accommodation available in the Victoria Falls, Zimbabwe. The Rest Camp is situated right in the middle of Victoria Falls town in Zimbabwe making it a perfect place to be based with all amenities within walking distance. The Restcamp is only 2 km from the falls making it the closest campsite to the Victoria Falls.

The security around the camp is a top priority with high stainless-steel fences and electric fences making it first-class. The rest camp boasts numerous well-maintained grass areas and an abundance of different varieties of trees making the surroundings in the camp very enjoyable. It makes this restcamp very popular for families as children have a safe and secure scenic environment to play in.



DAY 16: VICTORIA INTERNATIONAL AIRPORT TO VICTORIA FALLS REST CAMP 20.8KM

In this day, Guest will rest at Victoria fall rest camp



DAY 17: DEPARTURE

Last day of the tour, Guest will have breakfast and go back to their home today after a lifetime experience of Africa.



INCLUDE:

- Qualified professional driver guide
- Vehicle / fuel
- Park entrance fees as per itinerary
- Passenger liability 15%
- VAT 2% tourism levy
- Airport transfers
- Accommodation
- Breakfast and Dinner for the Client

EXCLUDE:

- Expenses of personal nature
- Entrance fees not mentioned in the itinerary
- Meals not mentioned
- Drinks at lodges and on road
- Optional excursions and activities
- Tips for tour guides
- International flights and airport taxes
- Items not mentioned in the itinerary

HOW TO BOOK AND HOW TO PAY:

To reserve this tour, a payment of 30% of the total price must be made at the time of reservation. The balance of 70% can be made 30 days before the departure of your tour. Your deposit can either be made through a Bank Transfer, with the addition of a 45 US Dollar fee or by Credit Card which incurs an additional bank charge of 3.5%