



**SAFARI**  
WORLD TOURS

15 DAYS BIG 5, GORILLA TREKKING & NATURE SAFARI  
(LODGING)

[www.safariworldtours.com](http://www.safariworldtours.com)



## TOUR DETAILS:

This 15 Days safari will let you visit Four top National parks in Uganda with a unforgettable experience of the wildlife in these areas which include, Gorillas, Climbing Lions, in this trip you catch the Big Five animals and climax this trip with a white water raft and a shoebill tour just before your flight.

## TOUR HIGHLIGHTS:

- Arrive and transfer to Murchison Falls where you expect boat trip to the base of the falls and game drive.
- Head to Kibale for chimp tracking and also explore the crater lakes.
- From Kibale, transfer to Queen Elizabeth NP. Enjoy the big game sighting plus launch trip along the Kazinga Channel. Proceed to Bwindi for the ultimate gorilla experience and go have relaxation in Lake Bunyonyi.
- Exit Bunyonyi for Lake Mburo NP and enjoy a park walk plus some game drive.



## TRIP FACTS:

Destinations	Accommodation	Nights	Meals
Lake Mburo National Park	Rwakobo Rock	1 Night	D
Bwindi Impenetrable Forest	Gorilla Mist Camp	2 Nights	AI
Southern Queen Elizabeth National Park	Elephant Hab Lodge	2 Nights	D,B&B
Kibale Forest National Park	Rweteera Safari Park	2 Nights	AI
Hoima	Hoima Cultural Lodge	1 Night	AI
Murchison Falls National Park	Twiga Tales Lodge	2 Night	AI
Jinja	Kingfisher Safaris Resort	2 Nights	FB
Entebbe	2 Friends Beach Hotel	2 Nights	FB

## ITINERARY (DAY BY DAY):

### DAY 1 - KAMPALA TO LAKE MBURO NATIONAL PARK

You will be picked up and drive to Lake Mburo National Park (for a 4 1/2hr drive), the 'Zebra magnet'. You will stop over and take photo at the equator and continue driving through Masaka. When entering the park enjoy a landscape of vast savannah dotted with acacia and shrubs. Head for the lodge for check in and lunch. In the late afternoon go for a game-drive for view of zebras, Topis, warthogs, cape buffaloes and impalas.

**Overnight: Rwakobo Rock**

**Distance: 237.1 km**

**Time: 4 hr 23 min**





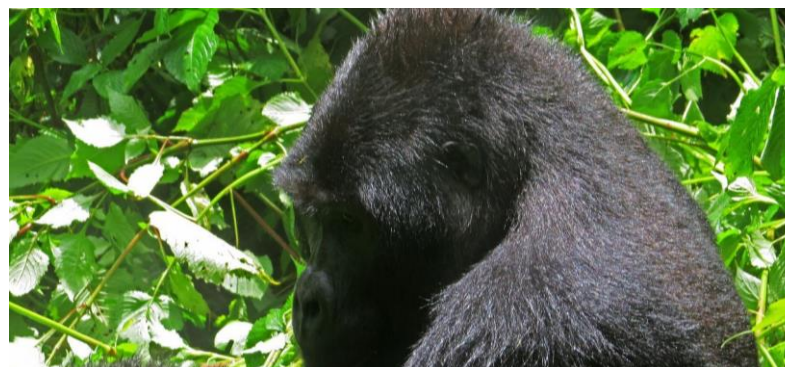
## DAY 2: LAKE MBURO NATIONAL PARK TO BWINDI NATIONAL PARK

You will be picked up in Kigali and drive to Bwindi National Park. The drive to Uganda will go through Rwanda's northern town of Ruhengeri his drive will take you approx. 4-5 hours. You will then cross over into Uganda via Cyanika or Katuna border post. Bwindi Impenetrable Forest is in south-western Uganda, the Bwindi Impenetrable Forest is said to be Africa's oldest rainforest. It is world-renowned for its excellent gorilla-sighting opportunities. The rugged landscape features dense jungle, cascading waterfalls, sparkling mountain streams, deep valleys and steep ridges. Upon arrival you will go on hiking.

**Overnight: Gorilla Mist Camp**

**Distance: 284.2 km**

**Time: 5 hr 50 min**

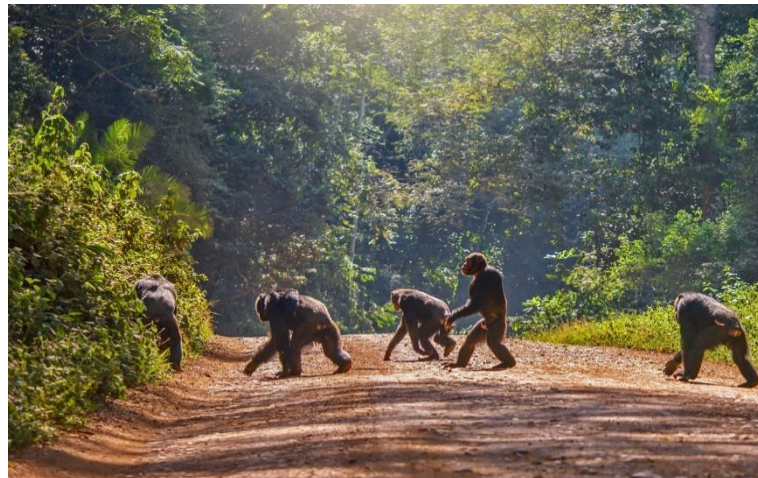




## DAY 3: BWINDI NATIONAL PARK

You will have a nice breakfast and will head to the Bwindi National Park gate immediately after to get a briefing about the gorilla trek. The national park guide will conduct the presentation that covers the basics of what to expect during the gorilla trek. The national guide will assign the gorilla trekking group during the pre-trekking briefing. Other visitors will likely join you. The gorilla trek can take from few to many hours, depending on how far the gorillas are inside the forest.

**Overnight: Gorilla Mist Camp**



## DAY 4: BWINDI IMPENETRABLE FOREST TO SOUTHERN QUEEN ELIZABETH NATIONAL PARK

You will have breakfast drive you to Queen Elizabeth National Park which is one of the most popular parks in Uganda, the Queen Elizabeth National Park lies in the western region of the country. In the northern part of the park, visitors can look forward to boating along the Kazinga Channel, which is home to the largest population of hippos in the world and an abundance of Nile crocodiles.

**Overnight: Elephant Hab Lodge**

**Distance: 17 km**

**Time: 3 hr**

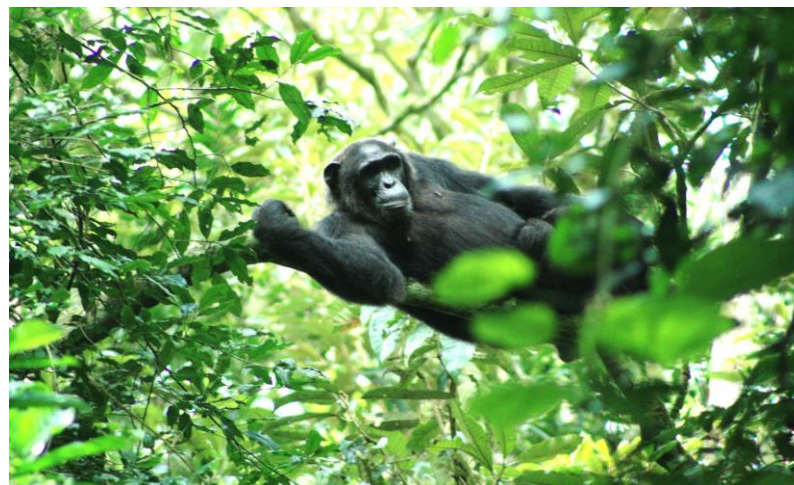
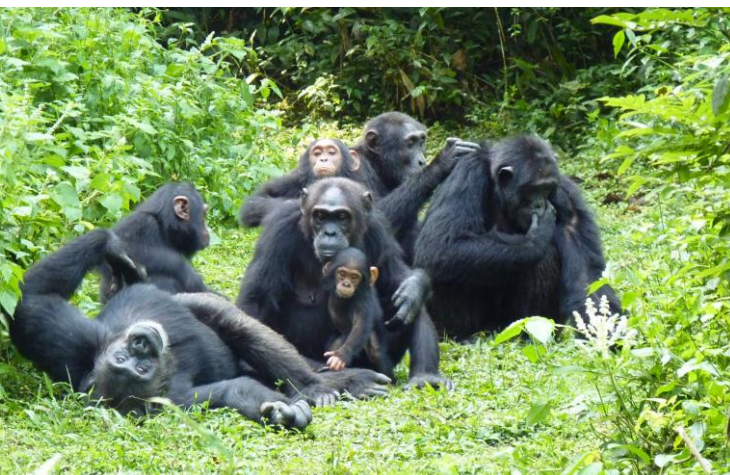




## DAY 5: SOUTHERN QUEEN ELIZABETH NATIONAL PARK

This morning you will wake up early. A little before sunrise coffee, tea and donuts will be served in the lounge before we head out for a long game drive in time to see the first rays of light. You will search for all the wildlife in the park and are likely to come across Elephant, Buffalo, Lion, Waterbuck, Leopard, Uganda Kob, and many Warthogs. A well-deserved brunch will be served back at the lodge in the late morning. In the afternoon you will take a boat safari along the Kazinga Channel which joins Lake George and Lake Edward. Here, you will see a lot of hippos (more than you can possibly imagine, as well as a variety of other animals which come to the waterhole to drink or bathe.

**Overnight: Elephant Hab Lodge**





## DAY 6: KAMPALA TO KIBALE FOREST NATIONAL PARK



You will have a nice breakfast Morning and will be transferred to Kibale forest national park, this will be so adventurous going through alongside the Rwenzori ranges and craters and some tea plantations towards Kibale forest national park then proceed to the lodge in the afternoon. Here in the evening you can go for a crater lake walk to the top of the world where you will have a view of three crater lakes in the same direction and Rwenzori ranges.

**Distance: 28.6 km**

**Time: 39 min**



## DAY 7: KIBALE FOREST NATIONAL PARK

You will have a nice early breakfast and will be briefed point then later your guide drive to the starting point where you will walk to the chimpanzees then after trekking your guide takes you for lunch then after lunch to the bigodi wetland walk in the afternoon, this walk will take almost 3 hours walk and you will be able to see a number of primates such as white and black columbas monkeys, red tailed monkeys, vervet monkeys, baboons and more others plus variety of bird species after this experience you will be taken to the lodge for an overnight.

**Overnight: Rweteera Safari Park**





## DAY 8: KIBALE FOREST NATIONAL PARK TO HOIMA

You will have a nice breakfast Morning you will drive to Hoima as we shorten our journey for the next day. The long route to Murchison Falls National Park is best broken down into two parts. We will spend the night in the little town of Hoima. After the drive, you can choose to explore this quaint upcountry centre or just relax by the hotel pool.

**Overnight: Hoima Cultural Lodge**

**Distance: 216.5 km**

**Time: 3 hr 35 min**





## DAY 9: HOIMA TO MURCHISON FALLS NATIONAL PARK

You will have a after breakfast at 8.00am and drive to Murchison Falls National Park via Zziwa Rhino Sanctuary where rhinos that got wiped out in the Ugandan wild are being bred before re-introduction back in the national parks. When you arrive at the Zziwa Rhino Sanctuary, a guide and armed rangers will take you on either a walking/by vehicle safari to look for the rhinos and around 12h00 to 13h00 enjoying a bush picnic lunch in the sanctuary's grounds. After lunch, you will drive to Murchison Falls National Park).

**Overnight: Twiga Tales Lodge**



## DAY 10: MURCHISON FALLS NATIONAL PARK

You will wake up early at 6.00am and go on a Morning game drive for a chance to view the magnificent daybreak from across the open savannah, birds and dotted woodland as well as reverine vegetation along the Nile. You will see animals like lions, buffalo, elephant, giraffes, antelope and a lot more. You will be back around 10-11am, to have breakfast. You will relax around the lodge until lunch hour and go for the boat launch to the bottom of the powerful Murchison Falls. This 3-hour boat cruise climaxes at the edge of the rift valley escarpment at which point you will get off the boat and trek to the top of the falls (wear sports shoes while on the boat for ease of trekking to the top). Having worked up a sweat, once at the top, get bathed in the misty spray that the Nile creates as it forces itself into the 7-metre cleft to create the famous Murchison Falls. You will your go back to the lodge for dinner.

**Overnight: Twiga Tales Lodge**





## DAY 11: MURCHISON FALLS NATIONAL PARK TO JINJA

You will have an early breakfast and shall drive out of the park to Ziwa Rhino Sanctuary where white rhinos are being nurtured before they are re-introduced into the parks. Ziwa Rhino and Wildlife Ranch located in Nakasongola district is the proud home of the only wild rhinos in Uganda. The Rhino re-introduction project is a project of Rhino Fund Uganda and Uganda Wildlife Authority, here you will have lunch and then drive to Jinja.

**Overnight: Kingfisher Safaris Resort**

**Distance: 360 km**

**Time: 6h 42m**

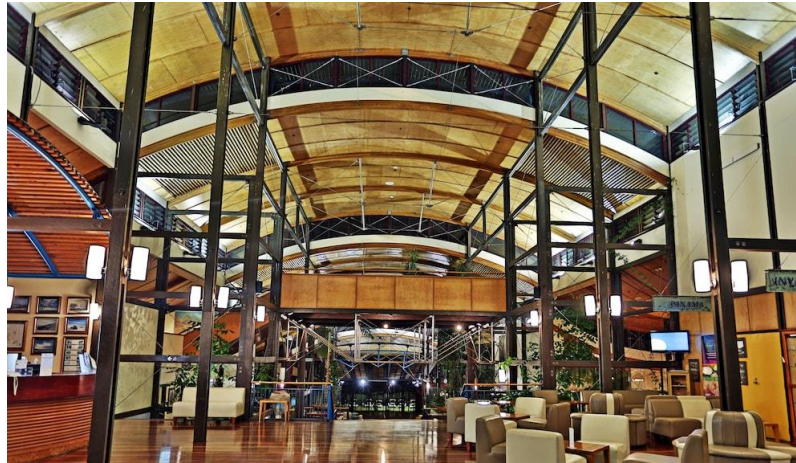




## DAY 12: JINJA

You will have the opportunity Experience Nile river which is a true source of the river which is believed to have been discovered by John speke on August 3rd, 1858. At the source, stands the mighty Lake Victoria which has been thought for a long time to be the source of the Nile. Waters from the large lake leave by the Victoria Nile to head north to join the Albert Nile in northern Uganda. When the water leaves the massive Lake Victoria, it does so in a spectacular fashion. The water pours out of the lake at the Ripon Falls, also known as Owen Falls Dam, in Uganda.

**Overnight: Kingfisher Safaris Resort**



## DAY 13: JINJA TO ENTEBBE

You will have breakfast and go for the adventurous white water rafting on the Nile River. The rafting begins at the Source of the Nile at 09:30am with a comprehensive briefing and being fitted with the special rafting gear. The rafting is done on an 18 kilometre stretch of the Nile River and no prior experience of rafting is required. The first few rapids are of low grade (1, 2) to build the confidence of the participants before guiding them gradually into the more challenging grades. A total of eight major rapids are rafted to maximize the adrenaline rush of this adventure. You will, after the rafting adventure, be treated to a barbecue lunch and drinks before setting off for Kampala.

**Overnight: 2 Friends Beach Hotel**

**Distance: 3.9 km**

**Time: 10 min**

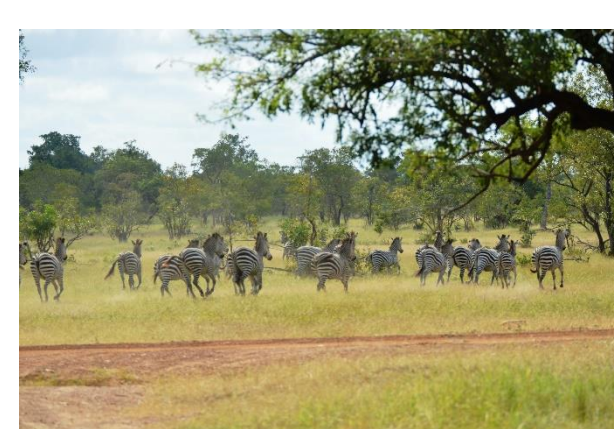




## DAY 14: ENTEBBE

You will be picked up in the morning as they will start the journey toward Mabamba Swamp, a bit south of Entebbe. If you are lucky we might make some interesting sightings of birds along the way. When reaching Mabamba swamp we go out in small boats to search for the Rare Shoebill stork, lesser jacana, marsh harriers, African pygmy-goose, and whistling ducks if it's the right season the blue swallow, blue breasted bee eater plus many more aquatic birds of Uganda. Hopefully we can finish the experience off with having made a sighting of the Great shoebill stork. You will later end our safari with departure in Entebbe.

**Overnight: 2 Friends Beach Hotel**





## DAY 15: ENTEBBE TO ENTEBBE INTERNATIONAL AIRPORT

This day will mark the last day of your safari. After Breakfast you expect to relax and enjoy the Entebbe Environment with a cool Breeze from the Lake Victoria as we get ready for your safari. Your Guide and driver will help you drive to the Airport for your checking and flight.





## INCLUDE:

- Qualified professional driver guide
- Vehicle / fuel
- Park entrance fees as per itinerary
- Passenger liability 15%
- VAT 2% tourism levy
- Airport transfers
- Accommodation
- Breakfast, Lunch and Dinner for the Client

## EXCLUDE:

- Expenses of personal nature
- Entrance fees not mentioned in the itinerary
- Meals not mentioned
- Drinks at lodges and on road
- Optional excursions and activities
- Tips for tour guides
- International flights and airport taxes
- Items not mentioned in the itinerary

## HOW TO BOOK AND HOW TO PAY:

To reserve this tour, a payment of 30% of the total price must be made at the time of reservation. The balance of 70% can be made before the departure of your tour. Your deposit can either be made through a Bank Transfer, with the addition of a 45 US Dollar fee or by Credit Card which incurs an additional bank charge of 3.5%.