



13 DAYS BEST HIGHLIGHT ZIMBABWE  
SAFARI SS (CAMPING)

[www.safariworldtours.com](http://www.safariworldtours.com)

## TOUR DETAILS:

This amazing 13-day Highlight Zimbabwe safari is a mobile camping tour that will take you around Zimbabwe, including Victoria Falls, Hwange National Park, Matopos, Great Zimbabwe Ruins, Gonarezhou National Park, and the Eastern Highlands including the Vumba Mountains, Nyanga then lastly Harare. With this safari, the guest will have a memorable experience.

## TOUR HIGHLIGHTS:

- A camping safari that takes travelers across Zimbabwe, visiting the country's greatest wildlife reserves and discovering its spectacular natural beauty on a journey from west to east.
- An amazing 13-day trip that reveals the mighty Victoria Falls, the fascinating Zimbabwe Ruins, and the famous Hwange National Park.





## TRIP FACTS:

DESTINATIONS	ACCOMMODATION	NIGHTS	MEALS
Victoria Falls	N1 Hotel	1 Night	D
Hwange National Park	Jambile Campsite	2 Nights	D, B&B
Bulawayo	Burkes Paradise	1 Night	D, B&B
Matobo National Park	Big Cave Camp	2 Nights	D, B&B
Great Zimbabwe Ruins	Great Zimbabwe Monument Campsite	2 Nights	D, B&B
Gonarezhou National Park	Mare Caravan Park Campsites	2 Nights	
Nyanga National Park	Rhodes Nyanga Hotel	1 Night	D, B&B
Eastern Highlands	Hidden Rocks	1 Night	D,B&B
Harare	Bronte Garden Hotel	1 Night	D,B&B

## ITINERARY (DAY BY DAY):

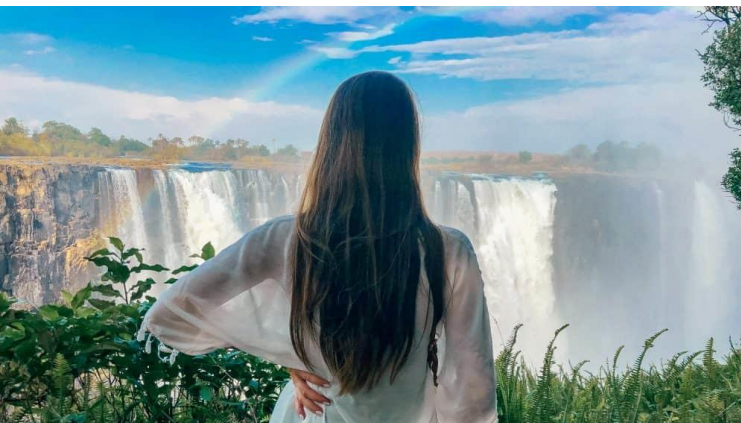
### DAY 1: VICTORIA FALLS AIRPORT TO VICTORIA FALLS

**Time/ Distance: 17 min (19.5 km)**

You will be picked up at the airport and depart their accommodation in Victoria Falls. Victoria Falls is in the largest water Fall in the world Resting on the southern banks of the Zambezi River at the western end of the eponymous falls. After arrival at the hotel guest will relax as and get ready to be picked up for a Sunset Cruise on the mighty Zambezi, this is your first River Safari as you get to see scores of Elephants, Hippos, Crocodiles, and other animals quenching their thirst in this Savannah heat.

**Accommodation: N1 Hotel**





## DAY 2: VICTORIA FALLS TO HWANGE NATIONAL PARK

**Time/ Distance: 1 hr 44 min (118.5 km)**

You will wake up and depart in the morning In Victoria Falls at their accommodation to Hwange national park. You will make a stopover in Hwange Town (100km from Victoria Falls) for a bathroom break (Baobab Hotel) and then proceed to their accommodation (Hwange Safari Lodge). Upon arrival, you will have leisure time and go on an afternoon game drive before dinner.

**Accommodation: Jambile Campsite**





## DAY 3: HWANGE NATIONAL PARK

You will wake up and go on an early morning game drive to experience the wilderness. You will experience the African sunrise in the park and might witness the cats soon after a kill or coming from a hunt. They will enjoy a mid-morning Breakfast after and relax by the pool or terrace and watch wildlife at the watering hole. You will get ready after lunch for an afternoon game drive which will focus more on water holes and most animals

**Accommodated: Jambile Campsite**



## DAY 4: HWANGE NATIONAL PARK TO BULAWAYO

**Time/ Distance: 3 hr 13 min (280.8 km)**

You will have breakfast and after breakfast guides dismantle the camp, check out and start your drive towards Bulawayo. Upon arrival in Bulawayo, tour guides will set up camps and after lunch hour they will enjoy the afternoon at your leisure. Optional activities are available in the afternoon, upon request. Dinner is served around the campfire and then you will turn in for the night.

**Accommodated: Burkes Paradise**

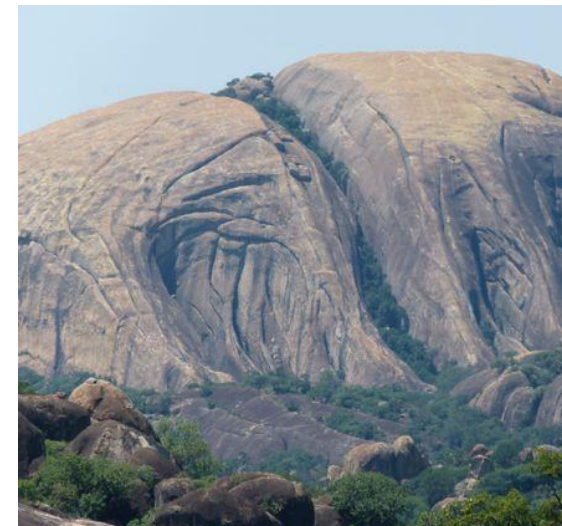




## DAY 5: BULAWAYO TO MATOBO NATIONAL PARK

**Time/ Distance: 36 min (37.4 km)**

You will have breakfast and depart to Matobo National park driving through Bulawayo city, which is about a 20-minute drive with a stop if you need a stop for snacks or a toilet. The guest will then depart to the UNESCO World Heritage Site of the Matobo Hills, the oldest National Park in Zimbabwe. Upon arrival, you will have time to check-in, unpack, and then reassembling for an afternoon game drive through the park looking for the rare Rhino.





## DAY 6: MATOBO NATIONAL PARK AREA

You will freshen up early and go on sunrise to enjoy the spectacular color change of the surrounding granite boulders as they get hit by the sun's first rays. They will enjoy breakfast and then go on the game drive to see numerous species of animals and birds. Matobo National Park and its surroundings are known to have one of the highest of leopard populations in Zimbabwe, hopefully, we can catch a glimpse of this elusive Big Cat. You will have their lunch on the game drive where they will stop to enjoy the view and have a picnic lunch. On the return ride to their accommodation, they will visit the grave of a man well known for his exploits throughout South Africa and Zimbabwe, Cecil John Rhodes. You will be back at camp just before sunset and enjoy the awesome views with a traditional sundowner.

### Accommodation: Big Cave Camp



## DAY 7: MATOBO NATIONAL PARK TO GREAT ZIMBABWE RUINS

**Time/ Distance: 4 hr 25 min (340.9 km)**

You will depart early morning to Great Zimbabwe. Once Zimbabwe's capital, the ancient city of Great Zimbabwe is the biggest and most significant stone archaeological complex in sub-Saharan Africa. It is also one of its oldest – thought to date back to the 11th century and second only to South Africa's Mapungubwe. Composed entirely of rectangular granite blocks stacked on top of one another without the use of mortar, the walls, and towers of the city measure up to 12 meters in places, and, unsurprisingly, Great Zimbabwe was designated a World Heritage Site in 1986.

**Accommodated: Great Zimbabwe Monument Campsite**





## DAY 8: GREAT ZIMBABWE RUINS TO GONAREZHOU NATIONAL PARK

**Time/ Distance: 1 hr 5 min (189 km)**

You will depart after breakfast and head to the most beautiful area of Zimbabwe, the Eastern Highlands. You will make a stop at the famous Birchenough Bridge. This lodge has a spectacular view over the Eastern Highlands, their homely exterior inviting you to indulge in the comforts inside. You will feel completely at ease in the large living/dining area, tastefully furnished in an ethnic style with a fully equipped kitchen.

**Accommodation: Mare Caravan Park Campsites**





## DAY 9: GONAREZHOU NATIONAL PARK

You will freshen up early and go for the morning game drive to view the wildlife and will be back at the campsite around lunch.

**Accommodation: Mare Caravan Park Campsites**



## DAY 10: GONAREZHOU TO NYANGA NATIONAL PARK

**Time/ Distance: 4 hr 45min (436 km)**

You will depart after breakfast guest will check out and begin your drive to Nyanga. Upon arrival, you will help set up camp and then have lunch. Nyanga National Park is home to a multitude of scenic rivers, refreshing streams, and breathtaking waterfalls. The park boasts both Zimbabwe's highest mountain peak and its highest waterfall. The elevated altitude provides a cool and pleasant climate and fresh mountain air, perfect for rest, relaxation, and plenty of outdoor adventures. The mountainous terrain and its sparkling freshwater sources offer excellent opportunities for fly fishing, sailing, canoeing, swimming, and hiking. You are likely to encounter a variety of fascinating wildlife including, among others: kudu, zebra, impala, sables, and eland. Dinner will be served around the campfire and then you will settle in for your overnight stay.

**Accommodation: Meikles Hotel**





## DAY 11: NYANGA NATIONAL PARK TO EASTERN HIGHLANDS

**Time/ Distance: 1 hr 56 min (72.7 km)**

You will depart after breakfast guest will check out and begin your drive to the highlands. Zimbabwe's eastern border with Mozambique is defined by the Eastern Highlands, comprised of three ranges of hills and mountains featuring the lush rolling hills and endless tea plantations of the Nyanga Range, the soaring granite peaks of the Chimanimani Mountains, and the fertile meadows and rich coffee plantations of the Bvumba Range. These breathtakingly scenic mountains serve as an ideal backdrop for the wide variety of outdoor pursuits on offer such as hiking, horse riding, golfing, and trout fishing. Upon arrival, you will go on a hiking trail.

**Accommodation: Hidden Rocks**





## DAY 12: EASTERN HIGHLANDS TO HARARE NATIONAL PARK

**Time/ Distance: 4 hr 20 min (297.5 km)**

Today you will drive after breakfast and have a relaxed scenic drive through the Eastern Highlands to Harare, the “Sunshine City”, capital of Harare. you will spend your last night in the luxurious Meikles Hotel. including a City Tour of Harare and a visit to one of the biggest and oldest markets in Zimbabwe, Mbare Musika.

**Accommodation: Bronte Garden Hotel**



## DAY 13: HARARE TO HARARE INTERNATIONAL AIRPORT

**Time/ Distance: 26 min (13.8 km)**

You will wake up and freshen up and drive to Harare International Airport.





## INCLUDE:

- Qualified professional driver-guide
- Vehicle / fuel
- Park entrance fees as per itinerary
- Passenger liability 15%
- VAT 2% tourism levy
- Airport transfers
- Accommodation
- Breakfast and Dinner for the Client

## EXCLUDE:

- Expenses of personal nature
- Entrance fees not mentioned in the itinerary
- Meals not mentioned
- Drinks at lodges and on road
- Optional excursions and activities
- Tips for tour guides
- International flights and airport taxes
- Items not mentioned in the itinerary

## HOW TO BOOK AND HOW TO PAY:

To reserve this tour, a payment of 30% of the total price must be made at the time of reservation. The balance of 70% can be made 30 days before the departure of your tour. Your deposit can either be made through a Bank Transfer, with the addition of a 45 US Dollar fee or by Credit Card which incurs an additional bank charge of 3.5%