



3 Days Serengeti NP & Ngorongoro
Crater (Lodging)

www.safariworldtours.com

TOUR DETAILS:

This 3 Day Serengeti NP & Ngorongoro Crater safari will take you to Serengeti & Ngorongoro. Accommodations will be in Lodge & Tented Camps. The accommodation will be in self-contained rooms with hot showers.

3 Day Serengeti NP & Ngorongoro Crater Overview :

- **DEPARTURE:** This tour departs from Arusha
- **COUNTRY('S):** Tanzania
- **DESTINATIONS:** Seronera
- **TOUR CODE:** 3A-TAN-SER-NG
- **RETURN:** Back to Arusha in the Afternoon
- **PASSENGERS:** Minimum 1 Traveler and a Maximum of 14 Travelers per group
- **STYLE:** Lodging
- **MEALS:** FB: Full Board – Dinner, Bed, Breakfast and Lunch
- **VEHICLE:** 2-3: Double Cab 4×4/

TRIP FACTS:

DESTINATIONS	ACCOMMODATION	NIGHTS	MEALS
Ndutu	Serengeti Ndutu Kati Kati Tented Camp	1 Night	FB
Ngorongoro Crater	Ngorongoro Rhino Lodge	1 Night	FB

ITINERARY (DAY BY DAY):

DAY 1: ARUSHA TO NDUTU (255.2 KM)

Accommodation: Serengeti Ndutu Kati Kati Tented Camp / Similar

Guest will be picked up at Arusha and depart towards the Serengeti National Park, through the beautiful high lying farmland of Karatu and the Ngorongoro Conservation Area Leaving the highlands behind. Seronera is In the Central park area, which is one of the richest wildlife habitats in the park, featuring the Seronera River Which provides a valuable water source to this area and therefore attracts wildlife well representative of most of the Serengeti's species We arrive in time for lunch and then will go on an afternoon game drive.

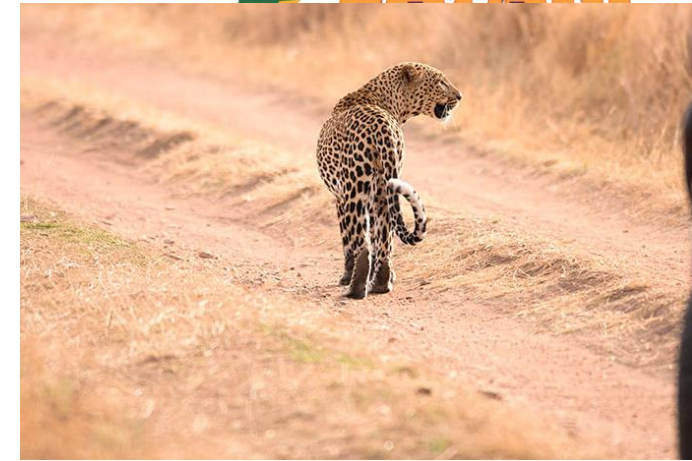
Meals: Lunch and Dinner

Included Activities: Afternoon Game Drive

Overnight: Serengeti Ndutu Kati Kati Tented Camp

Serengeti National Park

Situated in the south of Serengeti . With fantastic beautiful views to the African Savannah. In the best spot to enjoy the migration from December to April. The camps enable guest to experience an authentic African safari and at the same time offering the perfect balance between comfort, intimacy and splendid isolation. The camp is ecofriendly running on solar lighting. The camp consists of tent double spacious fully furnished tents and one family tent with en suite facilities, including a separate en suite WC and bucket shower. The camp completes its facilities with a mess tent where meals are served and a lounge tent. Ndutu Kati Kati Tented Camp –Open from December to April in the southern plains of Serengeti in the Serengeti National Park side.



DAY 2: NDUTU TO NGORONGORO CRATER (22.0 KM)

Accommodation: Ngorongoro Rhino Lodge, Ngorongoro Crater / Similar

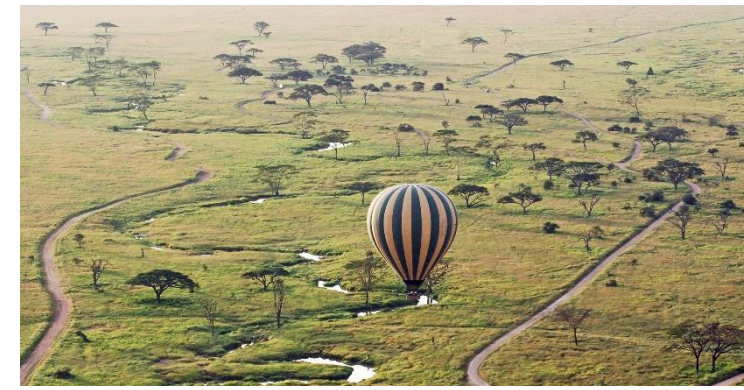
This day guest will have breakfast and enjoy morning game drive in Serengeti National Park and then depart to Ngorongoro Conservation area with game drive where the guest can take pictures and will have lunch box on the road. Ngorongoro is a special area of which it's a conservation area and not a National Park. The whole area is managed for both animals and local Masaai people who graze their cattle alongside the indigenous wildlife. upon arrival guest will have dinner and overnight at your lodge.

Meals: Breakfast, Lunch and Dinner

Included Activities: Full day Game Drive

Overnight: Ngorongoro Rhino Lodge

Located within the Ngorongoro Conservation Area in Tanzania, Ngorongoro Rhino Lodge is an excellent option for a nature vacation. The property features a selection of 24 comfortably furnished en-suite rooms which are equipped with fireplaces and balconies, and suites feature living rooms. A complimentary breakfast is served daily, and guests can enjoy meals and drinks at the on-site restaurant and bar.



DAY 3: NGORONGORO CRATER TO ARUSHA (54.1 KM)

This is the last day for the tour so after breakfast, the tour guide will pack up and prepare the lunch box for the guest to enjoy the morning game drive in the National park which is its huge population of predators, which include lions hyenas, jackals, cheetahs and the ever-elusive leopard crater floor. then the guest will drive back to Arusha.

Meals: Breakfast



INCLUDE:

- Qualified professional driver guide
- Vehicle / fuel
- Park entrance fees as per itinerary
- Passenger liability 15%
- VAT 2% tourism levy
- Airport transfers
- Accommodation
- Breakfast, Lunch and Dinner for the Client

EXCLUDE:

- Expenses of personal nature
- Entrance fees not mentioned in the itinerary
- Meals not mentioned
- Drinks at lodges and on road
- Optional excursions and activities
- Tips for tour guides
- International flights and airport taxes
- Items not mentioned in the itinerary

HOW TO BOOK AND HOW TO PAY:

To reserve this tour, a payment of 30% of the total price must be made at the time of reservation. The balance of 70% can be made before the departure of your tour. Your deposit can either be made through a Bank Transfer, with the addition of a 45 US Dollar fee or by Credit Card which incurs an additional bank charge of 3.5%.