



SAFARI
WORLD TOURS



7 DAYS BOTSWANA OKAVANGO
ELEPHANTS SAFARI

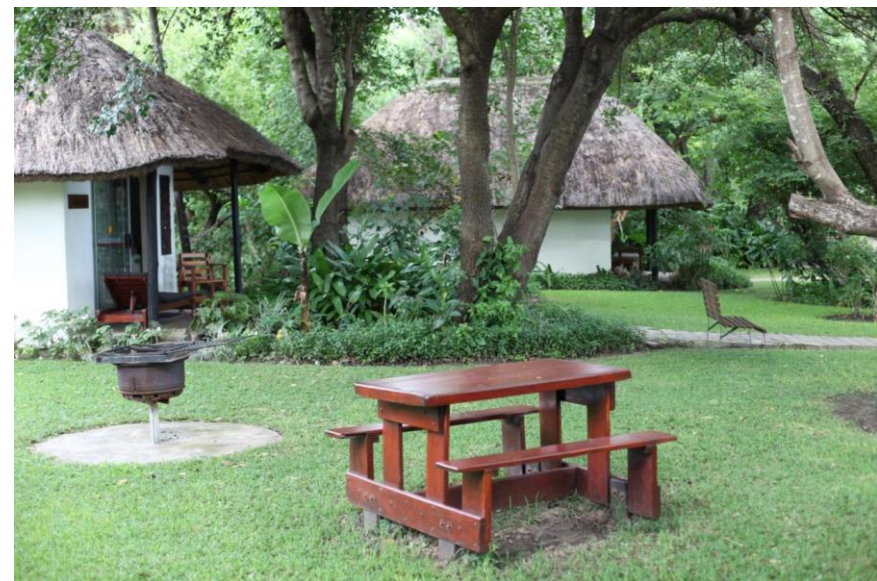
www.safariworldtours.com

TOUR DETAILS:

This wonderful 7 days 6 nights tour to Botswana Okavango Elephants Safari allows you to explore nature in its raw form. Take this nature opportunity to witness the game up close and personal in an exciting adventure you can cross out from your list. You will hear the roar of a lion in the vast wilderness regularly. The reserve is one of Africa's largest protected conservancies and is home to an abundance of wildlife.

TOUR HIGHLIGHTS:

- Explore the intricate world of Elephants on this Elephant Encounter Safari experience in the Okavango Delta and Chobe, two areas recognized for their wildlife and wilderness and in particular, their Elephant populations.
- On this safari, you will encounter the world's largest Elephant herds and spend intimate moments with semi-habituated Elephants.
- The wildlife in these areas will provide some of the best sightings, but for Elephant lovers this safari takes on greater meaning.



TRIP FACTS:

DESTINATIONS	ACCOMMODATION	NIGHTS	MEALS
Maun	Thamalakane River Lodge	2 Nights	D, B&B
Khwai Community Area	Sango Safari Camp	1 Night	D, B&B
Chobe National Park	Thobolo's Bush Lodge	2 Nights	D, B&B
Chobe River Front	River View Lodge	1 Night	D, B&B

ITINERARY (DAY BY DAY):

DAY 1: MAUN AIRPORT TO MAUN

Time/ Distance: 6 min (3.0 km)

You will be picked up at the airport and depart to their accommodation in Maun. These area attractions include a renowned riverboat that offers cruises up and down the Thamalakane River; the forest groves of the Maun Game Reserve; and Moremi Game Reserve, home to hippos, lions, and rhinos. After checking in and freshening up the client/s will depart in the afternoon for a Mokoro Excursion (for 2 hours). After this activity clients will get back and the lodge and get ready for Dinner.

Accommodation: Thamalakane River Lodge



DAY 2: MAUN

You will have breakfast and then go on the Game Drive. Clients will view some of Africa's wildlife and can have several stops to take pictures and explore. Clients will be back around lunch and after lunch has leisure time to rest.

Accommodation: Thamalakane River Lodge

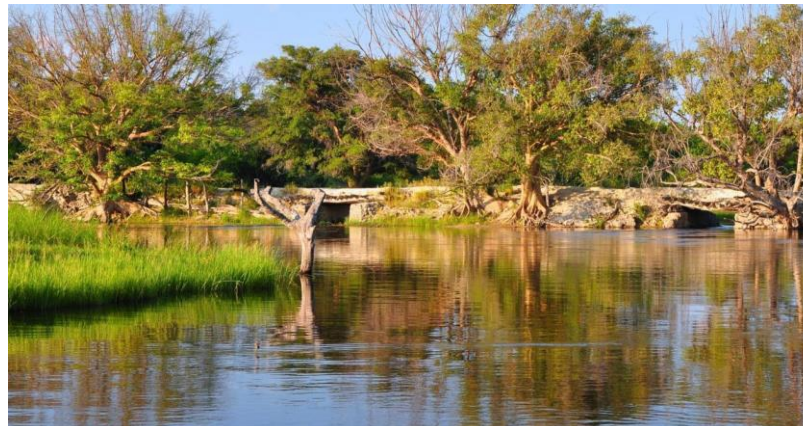


DAY 3: MAUN TO KHWAI COMMUNITY AREA

Time/ Distance: 2 hr (100 km)

After breakfast, the clients will depart Sango Safari Camp which is situated in Moremi. Throughout the drive, clients will have the opportunity to see and take pictures of animals roaming freely. The Khwai area of the Okavango lies along the northern boundary of the Moremi Game Reserve. This is an unfenced boundary allowing wildlife to move freely between the woodlands in the wet season when water is plentiful and back to permanent rivers and lagoons in the dry season.

Accommodated: Sango Safari Camp



DAY 4: KHWAI COMMUNITY AREA TO CHOBE NATIONAL PARK

Time/ Distance: 6 hr 26 Min(259 km)

You will have breakfast and depart to Chobe National park area, upon arrival clients will have a game drive throughout Chobe and its beautiful landscape across the challenging Magwike Sand point, which was the shoreline of the ancient inland sea, visit the Makgadikgadi Lake. Its deep sand, so in the wet season, it becomes impassable. After the game drive, the tour guide will prepare for dinner.

Accommodated: Thobolo's Bush Lodge



DAY 5: CHOBE NATIONAL PARK

You will have breakfast in the morning and then go on the Mokoro trial excursion. The mokoro usually carries one or two passengers, while the boatman stands at the stern using a long pole called a "ngashi", to pole or push the mokoro forward.

Accommodation: Thobolo's Bush Lodge



DAY 6: CHOBE NATIONAL PARK TO CHOBE RIVER FRONT

Time/ Distance: 14min (12.6 Km)

You will have a game drive throughout Chobe and its beautiful landscape across the challenging Magwike Sand point, which was the shoreline of the ancient inland sea, visit the Makgadikgadi Lake. Its deep sand, so in the wet season, it becomes impassable. After arrival clients will check-in and prepare for dinner.

Accommodation: aha Chobe Marina Lodge



DAY 7: CHOBE RIVER FRONT TO KASANE AIRPORT

Time/ Distance: 7 min (4.2 Km)

You will have breakfast and then depart to the Airport as they are going back to their land.



INCLUDE:

- Qualified professional driver-guide
- Vehicle / fuel
- Park entrance fees as per itinerary
- Passenger liability 15%
- VAT 2% tourism levy
- Airport transfers
- Accommodation
- Breakfast and Dinner for the Client

EXCLUDE:

- Expenses of personal nature
- Entrance fees not mentioned in the itinerary
- Meals not mentioned
- Drinks at lodges and on road
- Optional excursions and activities
- Tips for tour guides
- International flights and airport taxes
- Items not mentioned in the itinerary

HOW TO BOOK AND HOW TO PAY:

To reserve this tour, a payment of 30% of the total price must be made at the time of reservation. The balance of 70% can be made 30 days before the departure of your tour. Your deposit can either be made through a Bank Transfer, with the addition of a 45 US Dollar fee or by Credit Card which incurs an additional bank charge of 3.5%