



12 DAYS TOUR TO KENYA WILDLIFE AND UGANDA
GORILLA SAFARI (LODGING)

TOUR DETAILS:

This 12 days Tour to Kenya and Uganda Safari will visit Masai Mara Game reserve for wildlife viewing of the big five, you will visit Lake Naivasha and enjoy a boat ride, you will visit Lake Nakuru national park for game drives and then you will visit Amboseli National park for wildlife viewing and the beautiful sceneries of Mt. Kilimanjaro. You will visit Kibale National Park for chimpanzee tracking, you will visit Queen Elizabeth National Park for game drives, and you will visit Bwindi for gorilla trekking.

TOUR HIGHLIGHTS:

- Head out on an early evening game drive in Lake Nakuru National Park, which is particularly famous for its rhino population.
- Spend a few days at your own pace in Jinja, which can be either a relaxing riverside retreat or an adrenaline-pumping adventure capital depending on what you feel like.
- Visit a local Maasai community known for championing Maasai women's health and education. Be welcomed by traditional Maasai warrior song and dance and learn about this remarkable and ancient culture.
- Build the adventure that's perfect for you with a mixture of included activities and optional ones – like a chimpanzee trek in Kalinzu Forest.



TRIP FACTS:

DESTINATIONS	ACCOMMODATION	NIGHTS	MEALS
Masai Mara	Masai Mara Sopa Lodge	2 Nights	BB & D
Lake Nakuru National Park	Lake Nakuru Lodge	1 Night	BB & D
Uganda	Prime Hotel Tororo	1 Night	BB & D
Jinja	Jinja Nile Resort	1 Night	BB & D
Kibale Forest National Park	Kibale Guest Cottages	2 Nights	BB & D
Southern Queen Elizabeth National Park	Parkview Safari Lodge	2 Nights	BB & D
Bwindi Impenetrable Forest	Gorilla Mist Camp	2 Nights	BB & D

ITINERARY (DAY BY DAY):

DAY 1: NAIROBI TO MASAI MARA

Accommodation: Masai Mara Sopa Lodge, Masai Mara / Similar

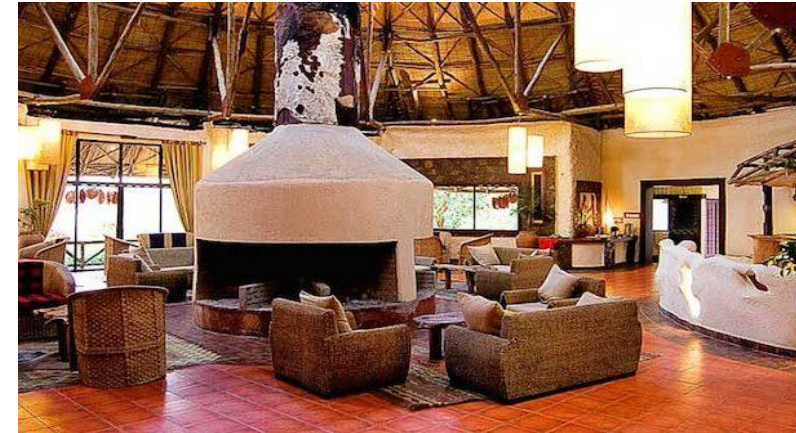
Guest will be picked up at the airport and depart to the Maasai Mara Game Reserve. You will have the opportunity to enjoy your lunch on your way and arrive in time for an evening game drive.

The Masai Mara together with Tanzania's Serengeti form Africa's most famous wildlife park, the Masai Mara National Reserve. The image of acacia trees dotting endless grass plains epitomises Africa for many, then add a Maasai warrior and some cattle to the picture and the conversation need go no further. The undeniable highlight of the Masai Mara National Reserve is undoubtedly the

annual wildebeest migration traversing the vast plains of the Serengeti and the Masai Mara. Your dinner and overnight stay will be at a camp with hot showers and flush toilets.

Meals: Lunch and Dinner

Included Activity: Game Drive



DAY 2: MASAI MARA AREA

Accommodation: Masai Mara Sopa Lodge, Masai Mara / Similar

Guest will wake up to a nice breakfast and then proceed on a full day of game viewing within the reserve. The landscape here is scenic savannah grassland on rolling hills. The reserve is the best park for game viewing in Kenya as it has an extensive road and track network that allows for close range viewing and photography. Break for your picnic lunch by the hippo pool, looking out for resident hippos and crocodiles. Your dinner and overnight will be at the camp.

Meals: Breakfast and Dinner

Included Activity: Full day Game

Overnight: Masai Mara Sopa Lodge

Accommodation: Masai Mara Sopa Lodge, Masai Mara / Similar

Guest will wake up to a nice breakfast and then proceed on a full day of game viewing within the reserve. The landscape here is scenic savannah grassland on rolling hills. The reserve is the best park for game viewing in Kenya as it has an extensive road and

track network that allows for close range viewing and photography. Break for your picnic lunch by the hippo pool, looking out for resident hippos and crocodiles. Your dinner and overnight will be at the camp.

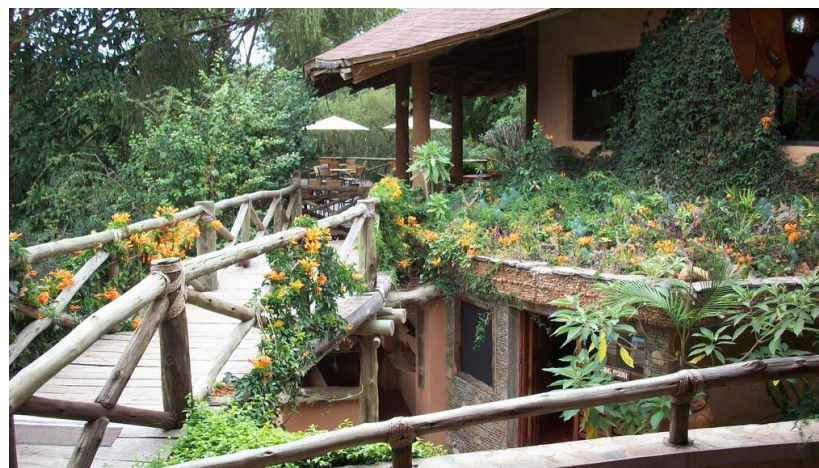
Meals: Breakfast and Dinner

Included Activity: Full day Game

Overnight: Masai Mara Sopa Lodge

Located on the slopes of Oloolaimitia Hills, this is one of the first lodges to be built in the Masai Mara Game Reserve. Guests are drawn to the ethnic design of this Lodge, which itself is surrounded by a landscape rich in flora, from wild olive, bitter aloe vera, croton and Mexican trees.

The Lodge has 50 round buildings, each with two rooms. Eight of the 50 cottages have interconnecting rooms. The honeymoon suite is situated at the top of the property providing an uninterrupted view. This very spacious suite has a king-size bed, a shower and a sunken bath. A spacious verandah is perfect to watch the sunset or enjoy private meals. There are 12 suites, each with a large living area, spacious bedroom with either one lking size bed or two queen-size beds, mosquito nets, en-suite bathroom with shower, coffee table with chairs and a mini-bar on request . The standard rooms equally have a choice of one king size bed or two queen size beds with mosquito nets and en-suite bathrooms with shower. Each has a verandah with two safari chairs.



DAY 3: MASAI MARA TO NAKURU 134.4KM

Accommodation: Lake Nakuru Lodge, Lake Nakuru National Park / Similar

Guest will have early breakfast and departure to lake nakuru whereby they will arrive around lunch. Nakuru is a city on the shores of western Kenya's Lake Nakuru, within a reserve that sprawls across almost 200 square kilometres. It is the capital of Nakuru County, located in the Great Rift Valley. Ten kilometres from town lies the massive Menengai Crater. Later in the afternoon guest will go on an afternoon game drive.

Meals: Breakfast and Dinner

Included Activity: Afternoon Game Drive

Overnight: Lake Nakuru Lodge

Situated inside Lake Nakuru National Park, Lake Nakuru Lodge is an eco-lodge that provides peerless views of wildlife and Lake Nakuru. Each guest rooms features a Wi-Fi, a flat-screen TV and a seating area. The lodge also includes an in-house restaurant and an outdoor pool. Guests can visit must-see sights such as Egerton Castle and Menengai Crater less than 50km away from the property.



DAY 4: NAKURU TO UGANDA

Accommodation: Prime Hotel Tororo, Uganda / Similar

Guest will have early breakfast and departure to Uganda, or the 'Pearl of Africa', as it was famously dubbed by Winston Churchill, is characterised by relatively dry and flat savanna in the north, with verdant mountains in the West, and vast dense and remarkably lush forests in the central region. The nation is home to an astonishingly diverse range of African wildlife including the highly endangered mountain gorilla which can be found in the Bwindi Impenetrable Forest. A popular spot for wildlife watching is Queen Elizabeth National Park, which hosts four of the Big Five, a flock of flamboyant flamingos and the rare tree-climbing lions of Ishasha. Upon arrival guest will check in and go on Hiking.

Meals: Breakfast and Dinner

Included Activity: hiking

Overnight: Prime Hotel Tororo

Located in Tororo, Prime Hotel Tororo offers comfortable and budget-friendly accommodation in the area. The rooms are spacious and feature mosquito nets, flat-screen TVs, wardrobes and desks. The on-site restaurant serves a substantial a la carte menu which includes a variety of local and exotic dishes. There is also a bar where guests can order alcoholic and non-alcoholic beverages. There is ample parking space available for guests and car hire and laundry services can be arranged upon request.



DAY 5: UGANDA TO JINJA

Accommodation: Jinja Nile Resort, Jinja / Similar

Guest will have an early breakfast and shall drive out of the park to Ziwa Rhino Sanctuary where white rhinos are being nurtured before they are re-introduced into the parks. Ziwa Rhino and Wildlife Ranch located in Nakasongola district is the proud home of the only wild rhinos in Uganda. The Rhino re-introduction project is a project of Rhino Fund Uganda and Uganda Wildlife Authority, here you will have lunch and then drive to Jinja.

Meals: Lunch and Dinner (Other drinks not included)

Included Activity: Game Drive and Canoeing

Overnight: Jinja Nile Resort

Jinja Nile Resort is ideally located close to Bujagali Falls, Jinja Temple, and the source of the Nile River, making it one of the most ideal places to stay while in Jinja. Jinja Nile Resort has 140 private guest rooms en suited with a small sitting room and a private Nile facing balcony. Facilities at the resort include a swimming pool, tennis court, onsite dining, off street parking and more.



DAY 6: JINJA TO KIBALE FOREST NATIONAL PARK

Accommodation: Rweteera Safari Park, Kibale Forest National Park / Similar

Guest will have a nice breakfast Morning and will be transferred to Kibale forest national park, this will be so adventurous going through alongside the rwenzori ranges and craters and some tea plantations towards Kibale forest national park then proceed to the lodge in the afternoon. Here in the the evening you can go for a crater lake walk to the top of the world where you will have a view of three crater lakes in the same direction and rwenzori ranges.

Meals: Lunch and Dinner (Other drinks not included)

Included Activity: lake Walk



DAY 7: KAMPALA TO KIBALE FOREST NATIONAL PARK

Accommodation: Kibale Guest Cottages, Kibale Forest National Park / Similar

Guest will have a nice early breakfast and will be briefed point then later your guide drive to the starting point where you will walk to the chimpanzees then after trekking your guide takes you for lunch then after lunch to the bigodi wetland walk in the afternoon, this walk will take almost 3 hours walk and you will be able to see a number of primates such as white and black columbas monkeys, red tailed monkeys, vervet monkeys, baboons and more others plus variety of bird species after this experience you will be taken to the lodge for an overnight.

Meals: Lunch and Dinner (Other drinks not included)

Included Activity: Trekking

Overnight: Kibale Guest Cottages

Situated at Fort Portal, adjacent to Kibale National Park, Kibale Guest Cottages are private unique luxury cottages with a view of the tropical forest. Facilities include the internet, a restaurant, and a pub. Nearby attractions include the Swamp Walk Centre, the Chimp Tracking Centre, Kibale Forest Corridor Game Reserve and Lake Nkuruba Nature Reserve.

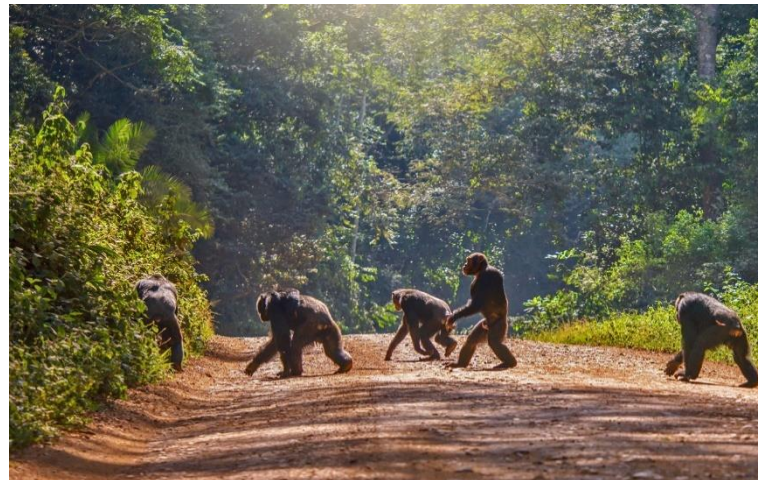


DAY 8: BWINDI IMPENETRABLE FOREST TO SOUTHERN QUEEN ELIZABETH NATIONAL PARK

Accommodation: Parkview Safari Lodge, Southern Queen Elizabeth National Park / Similar

Guest will have breakfast drive you to Queen Elizabeth National Park which is one of the most popular parks in Uganda, the Queen Elizabeth National Park lies in the western region of the country. In the northern part of the park, visitors can look forward to boating along the Kasinga Channel, which is home to the largest population of hippos in the world and an abundance of Nile crocodiles.

Meals: Breakfast, Dinner and Lunch



DAY 9: SOUTHERN QUEEN ELIZABETH NATIONAL PARK

Accommodation: Parkview Safari Lodge, Southern Queen Elizabeth National Park / Similar

This morning guest will wake up early. A little before sunrise coffee, tea and donuts will be served in the lounge before we head out for a long game drive in time to see the first rays of light. You will search for all the wildlife in the park and are likely to come across Elephant, Buffalo, Lion, Waterbuck, Leopard, Uganda Kob, and many Warthogs.

A well-deserved brunch will be served back at the lodge in the late morning.

In the afternoon you will take a boat safari along the Kazinga Channel which joins Lake George and Lake Edward.

Here, you will see a lot of hippos (more than you can possibly imagine, as well as a variety of other animals which come to the waterhole to drink or bathe.

Meals: All meals included Drinking water (Other drinks not included)

Included Activity: Game Drive and Boat Safari

Overnight: Parkview Safari Lodge

Parkview Safari Lodge is a Uganda safari lodge located in Queen Elizabeth National Park in the Kyambura area. The lush en-suite cottages are nicely placed in a natural ecosystem setting crafted using natural materials and fitted with canvas that blends with their surroundings. The cottages are thatched with local grass presenting a cool atmosphere suitable for relaxation while on safari. Equipped with both hot and cold running water, the bathtubs and showers overlook the wilderness while the private wooden decks offer uninterrupted views of the park Savannah when lit by electricity. Parkview Safari Lodge is considerably rich in facilities including a fully equipped conference hall, restaurant with an extensive menu providing both local and international cuisines, library and reading area where you can learn more about conservation and Queen Elizabeth National Park in general, sauna and steam bath, massage parlour, gift shop where one can secure a souvenir to commemorate the Uganda tour, extensive swimming pool offering a deep bath after an extensive game drive, laundry services, internet connectivity that keeps one connected in the outside world and a well stocked bar.



DAY 10: SOUTHERN QUEEN ELIZABETH NATIONAL PARK TO BWINDI NATIONAL PARK

Accommodation: Gorilla Mist Camp, Bwindi Impenetrable Forest / Similar

Guest will be picked up in Kigali and drive to Bwindi National Park. The drive to Uganda will go through Rwanda's northern town of Ruhengeri his drive will take you approx 4-5 hours. Guest will then cross over into Uganda via Cyanika or Katuna border post. Bwindi Impenetrable Forest is in southwestern Uganda, the Bwindi Impenetrable Forest is said to be Africa's oldest rainforest. It is world-renowned for its excellent gorilla-sighting opportunities. The rugged landscape features dense jungle, cascading waterfalls, sparkling mountain streams, deep valleys and steep ridges. Upon arrival guest will go on hiking

Meals: Breakfast, Lunch and Dinner

Included Activity: Hiking Trial



DAY 11: BWINDI NATIONAL PARK

Accommodation: Gorilla Mist Camp, Bwindi Impenetrable Forest / Similar

Guest will have a nice breakfast and will head to the Bwindi National Park gate immediately after to get a briefing about the gorilla trek. The national park guide will conduct the presentation that covers the basics of what to expect during the gorilla trek. The national guide will assign the gorilla trekking group during the pre-trekking briefing. Other visitors will likely join you. The gorilla trek can take from few to many hours, depending on how far the gorillas are inside the forest.

Meals: All meals included Drinking water (Other drinks not included)

Included Activity: Gorilla Trekking

Overnight: Gorilla Mist Camp

Gorilla Mist Camp is in the south-western wing of Ruhija tracking area in Bwindi Impenetrable National Park. Accommodation at the camp features 3 tented rooms with facilities such as solar electricity, Wi-Fi and constant water supply. Other amenities and services offered are a bar, restaurant, lounge, dining area, fireplace, a balcony and laundry services. Some activities at the camp include bird watching, nature walk and a tour of the nearby village.



DAY 12: BWINDI NATIONAL PARK TO NAIROBI

Guest wake up and after a nice breakfast, depart to Nairobi, enjoying lunch on the route and arriving at your hotel in the evening. This will conclude your safari.

Meals: Breakfast

End of Tour



INCLUDE:

- Qualified professional driver guide
- Vehicle / fuel
- Park entrance fees as per itinerary
- Passenger liability 15%
- VAT 2% tourism levy
- Airport transfers
- Accommodation
- Breakfast and Dinner for the Client

EXCLUDE:

- Expenses of personal nature
- Entrance fees not mentioned in the itinerary
- Meals not mentioned
- Drinks at lodges and on road
- Optional excursions and activities
- Tips for tour guides
- International flights and airport taxes
- Items not mentioned in the itinerary

HOW TO BOOK AND HOW TO PAY:

To reserve this tour, a payment of 30% of the total price must be made at the time of reservation. The balance of 70% can be made 30 days before the departure of your tour. Your deposit can either be made through a Bank Transfer, with the addition of a 45 US Dollar fee or by Credit Card which incurs an additional bank charge of 3.5%