

# 11-DAYS ZIMBABWE HIGHLIGHTS SAFARI SS (LODGING)

[www.safariworldtours.com](http://www.safariworldtours.com)



## TOUR DETAILS:

This 11 Day Safari is in Zimbabwe which includes Victoria Falls, one of the Seven Natural Wonders of the World, Hwange National Park which boasts a tremendous selection of wildlife with over 100 species of mammals and nearly 400 bird species recorded plus one of the largest elephant populations in the world. Matopos Hills where Cecil John Rhodes' grave is, the extensive stone ruins of Great Zimbabwe and onto the "Little Scotland" of Zimbabwe, the Eastern Highlands with the last night in the vibrant capital Harare. This safari will give you a lifetime experience.

## TOUR HIGHLIGHTS:

- Beginning at the majestic Victoria Falls in Zimbabwe.
- This trip begins in Victoria Falls, Zimbabwe, and ending in Johannesburg, South Africa.



## TRIP FACTS:

DESTINATIONS	ACCOMMODATION	NIGHTS	MEALS
<b>Zimbabwe</b>	Shearwater Explorers Village Victoria Falls	2 Nights	D, B&B
<b>Hwange National Park</b>	Ivory Lodge	2 Nights	D, B&B
<b>Matobo National Park</b>	Big Cave Camp	2 Nights	D, B&B
<b>Great Zimbabwe Ruins</b>	Norma Jeane's Lake View Resort	1 Night	D, B&B
<b>Mutare</b>	Musangano Lodge	2 Nights	D, B&B
<b>Harare</b>	Meikles Hotel	1 Night	B&B

## ITINERARY (DAY BY DAY):

### DAY 1: VICTORIA FALLS AIRPORT TO VICTORIA FALLS

**Time/ Distance: 17 min (19.5 km)**

You will be picked up at the airport and depart their accommodation in Victoria Falls. Victoria Falls is in the largest water Fall in the world Resting on the southern banks of the Zambezi River at the western end of the eponymous falls. After arrival at the hotel guest will relax as and get ready to be picked up for a Sunset Cruise on the mighty Zambezi, this is your first River Safari as you get to see scores of Elephants, Hippos, Crocodiles, and other animals quenching their thirst in this Savannah heat.

**Accommodation: Shearwater Explorers Village**





## DAY 2: VICTORIA FALLS AREA

You will wake up to a nice breakfast at the hotel and get ready to be picked up for the Guided Tour of the Falls. The Tour Starts at 'the Big Tree', an old Baobab located in Victoria Falls National Park. Botanists believe the tree is over 1,000 years old. Guest will be blown away by this magnificent wonder as you walk for 2km viewing all the 16 points that take you closer to the edge as you view the mighty Zambezi dropping for more than 100m at the Falls. After lunch guests will have leisure time to do extra activities or enjoy around the hotel.

**Accommodation: Shearwater Explorers Village**





## DAY 3: VICTORIA FALLS TO HWANGE NATIONAL PARK

**Time/ Distance: 1 hr 43 min (118.5 km)**

You will wake up and depart in the morning In Victoria Falls at their accommodation to Hwange national park. You will make a stopover in Hwange Town for a bathroom break (Baobab Hotel) and then proceed to their accommodation (Hwange Safari Lodge). Upon arrival, guests will have leisure time and go on an afternoon game drive before dinner.

**Accommodated: Ivory Lodge**



## DAY 4: HWANGE NATIONAL PARK

You will wake up and go on an early morning game drive to experience the wilderness. Guest will Experience the African Sunrise in the park and might witness the cats soon after a kill or coming from a hunt. They will enjoy a mid-morning Breakfast after and relax by the pool or terrace and watch wildlife at the watering hole. Guest will get ready after lunch for an afternoon game drive which will focus more on water holes and most animals.

**Accommodated: Ivory Lodge**





## DAY 5: HWANGE NATIONAL PARK TO MATOBO NATIONAL PARK

**Time/ Distance: 3 hr 50 min**

You will have breakfast and depart to Matobo National park driving through Bulawayo city, which is about a 20-minute drive with a stop if you need a stop for snacks or a toilet. The guest will then depart to the UNESCO World Heritage Site of the Matobo Hills, the oldest National Park in Zimbabwe. upon arrival guests will have time to check-in, unpack and then reassemble for an afternoon game drive through the park looking for the rare Rhino.

**Accommodation: Big Cave Camp**



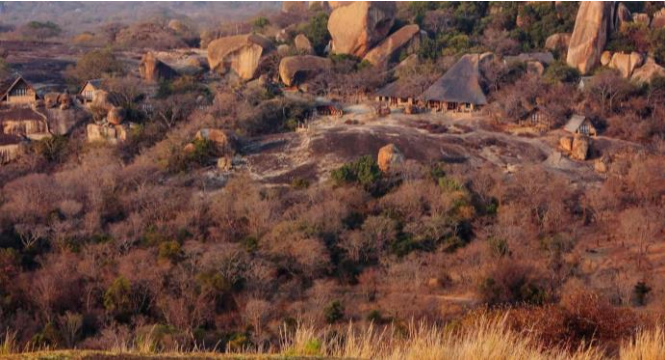
## DAY 6: MATOBO NATIONAL PARK AREA

You will freshen up early and go on sunrise to enjoy the spectacular color change of the surrounding granite boulders as they get hit by the sun's first rays. they will enjoy breakfast and then go on the game drive to see numerous species of animals and birds. Matobo National Park and its surroundings are known to have one of the highest of leopard populations in Zimbabwe, hopefully, we can catch a glimpse of this elusive Big Cat. Guest will have their lunch on the game drive where they will stop to enjoy the view and have a picnic lunch.



On the return ride to their accommodation, they will visit the grave of a man well known for his exploits throughout South Africa and Zimbabwe, Cecil John Rhodes. Guest will be back at camp just before sunset and enjoy the awesome views with a traditional sundowner.

#### Accommodation: Big Cave Camp

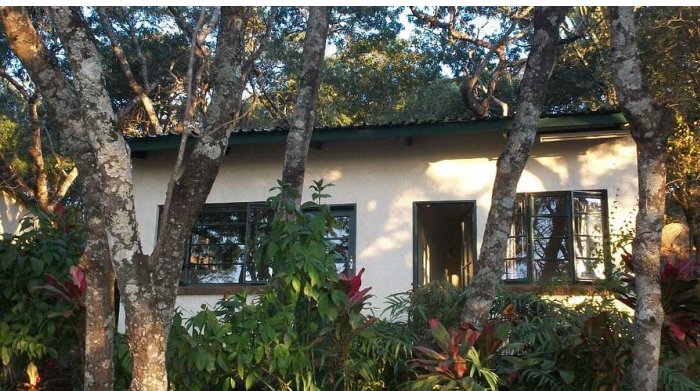


## DAY 7: MATOBO NATIONAL PARK TO GREAT ZIMBABWE RUINS

**Time/ Distance: 4 hr 24 min (340.9 km)**

You will depart early morning to great Zimbabwe. Once Zimbabwe's capital, the ancient city of Great Zimbabwe is the biggest and most significant stone archaeological complex in sub-Saharan Africa. It is also one of its oldest – thought to date back to the 11th century and second only to South Africa's Mapungubwe. Composed entirely of rectangular granite blocks stacked on top of one another without the use of mortar, the walls, and towers of the city measure up to 12 meters in places, and, unsurprisingly, Great Zimbabwe was designated a World Heritage Site in 1986.

#### Accommodated: Norma Jeane's Lake View Resort





## DAY 8: GREAT ZIMBABWE RUINS TO MUTARE

**Time/ Distance: 4 hr 5 min (325.6 km)**

You will depart after breakfast and head to the most beautiful area of Zimbabwe, the Eastern Highlands. You will make a stop at the famous Birchenough Bridge. This lodge has a spectacular view over the Eastern Highlands, their homely exterior inviting you to indulge in the comforts inside. You will feel completely at ease in the large living/dining area, tastefully furnished in an ethnic style with a fully equipped kitchen.

**Accommodation: Musangano Lodge**



## DAY 9: FULL DAY AT MUTARE

You will have another day at Musangano Lodge. You will freshen up early and can book extra optional activities that are available to be booked directly at the lodge.

**Accommodation: Musangano Lodge**



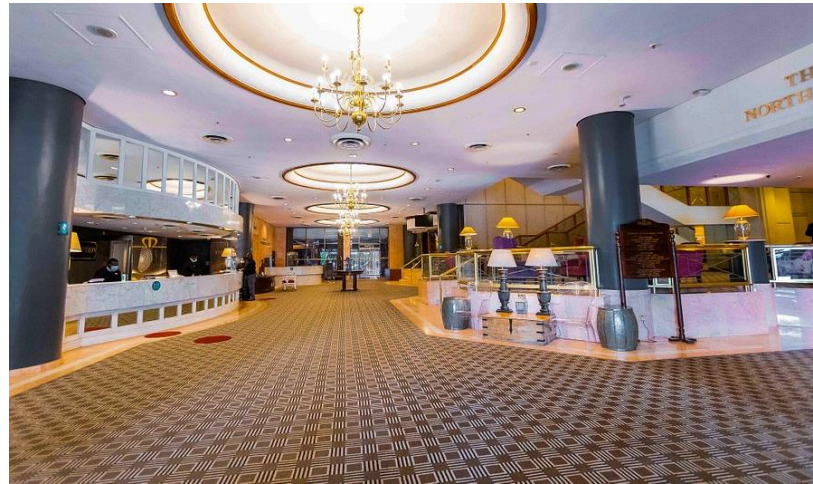


## DAY 10: GREAT ZIMBABWE RUINS TO MUTARE

**Time/ Distance: 4 hr 5 min (325.6 km)**

Today you will drive after breakfast and have a relaxed scenic drive through the Eastern Highlands to Harare, the "Sunshine City", capital of Harare. Guest will spend their last night in the luxurious Meikles Hotel. including a City Tour of Harare and a visit to one of the biggest and oldest markets in Zimbabwe, Mbare Musika.

**Accommodation: Meikles Hotel**



## DAY 11: HARARE TO HARARE INTERNATIONAL AIRPORT

You will wake up and freshen up and drive to Harare International Airport.





**INCLUDE:**

- Qualified professional driver-guide
- Vehicle / fuel
- Park entrance fees as per itinerary
- Passenger liability 15%
- VAT 2% tourism levy
- Airport transfers
- Accommodation
- Breakfast and Dinner for the Client

**EXCLUDE:**

- Expenses of personal nature
- Entrance fees not mentioned in the itinerary
- Meals not mentioned
- Drinks at lodges and on road
- Optional excursions and activities
- Tips for tour guides
- International flights and airport taxes
- Items not mentioned in the itinerary

**HOW TO BOOK AND HOW TO PAY:**

To reserve this tour, a payment of 30% of the total price must be made at the time of reservation. The balance of 70% can be made 30 days before the departure of your tour. Your deposit can either be made through a Bank Transfer, with the addition of a 45 US Dollar fee or by Credit Card which incurs an additional bank charge of 3.5%